

**A 10 Factor Heath, Jarrow and Morton Stochastic Volatility Model  
for the U.S. Treasury Yield Curve,  
Using Daily Data from January 1, 1962 through December 31, 2018  
Donald R. van Deventer<sup>1</sup>  
First Version: April 1, 2019  
This Version: April 22, 2019**

**ABSTRACT**

This paper analyzes the number and the nature of factors driving the movements in the U.S. Treasury yield curve from January 2, 1962 through December 31, 2018. The process of model implementation reveals a number of important insights for interest rate modeling generally. First, model validation of historical yields is important because those yields are the product of a third-party curve fitting process that may produce spurious indications of interest rate volatility. Second, quantitative measures of smoothness and international comparisons of smoothness provide a basis for measuring the quality of simulated yield curves. Third, we outline a process for incorporating insights from the Japanese experience with negative interest rates into term structure models with stochastic volatility in the United States and other countries. Finally, we illustrate the process for comparing stochastic volatility and affine models of the term structure. We conclude that stochastic volatility models have a superior fit to the history of yield movements in the U.S. Treasury market.

---

<sup>1</sup> Kamakura Corporation, 2222 Kalakaua Avenue, Suite 1400, Honolulu, Hawaii, USA, 96815. E-Mail [dvandeventer@kamakuraco.com](mailto:dvandeventer@kamakuraco.com). The author wishes to thank Prof. Robert A. Jarrow for 24 years of conversations on this topic. The author also wished to thank the participants at a seminar organized by the Bank of Japan at which a paper addressing similar issues in a Japanese government bond context was presented.

## **A 10 Factor Heath, Jarrow and Morton Model for the U.S. Treasury Yield Curve, Using Daily Data from January 1, 1962 through December 31, 2018**

Government yield curves are a critical input to the risk management calculations of central banks, bank regulators, major banks, insurance firms, fund managers, pension funds, and endowments around the world. With the internationalization of fixed income investing, it is important to understand the dynamics of movements in yield curves worldwide, in addition to the major bond markets like those in Frankfurt, London, New York and Tokyo. In this paper, we fit a multi-factor Heath, Jarrow and Morton model to daily data from the U.S. Treasury market over the period from January 2, 1962 to December 31, 2018. The modeling process reveals a number of important implications for term structure modeling in other government bond markets.

Section I discusses the origin and characteristics of the daily data base of U.S. Treasury yields provided by the U.S. Department of the Treasury. We present a video of daily yield curve movements after overlaying the maximum smoothness forward rates (see Adams and van Deventer, 1994, as modified in van Deventer and Imai, 1996). We also compare the smoothness measures of Japanese and U.S. Treasury yield curves. We conclude that the U.S. Department of Treasury time series is realistically smooth and a reliable foundation for term structure modeling. This compares with recent findings from Japan and Thailand where we found that yield curves were unrealistically rough and that modification of the input data was necessary for a realistic model, a standard part of a Bayesian model validation process.

Section II outlines the process for determining whether the interest rate volatility for the factors driving the U.S. Treasury yield curve is constant (an “affine” model) or stochastic, typically expressed as a function of the level of interest rates. We note the extensive experience with negative interest rates in the Japanese government bond market and use insights from that experience in fitting volatility in the U.S. Treasury market. Section III describes the process of fitting five different Heath, Jarrow and Morton models to U.S. Treasury yield data: models with 1, 2, 3, 6 and 10 factors. We conclude Section III with extensive Bayesian model validation procedures based on a 30-year forward-looking simulation of 100,000 scenarios. Section IV concludes the paper. The Appendix illustrates a sample model validation process for widely used one factor term structure models using U.S. data.

### **I. U.S. Treasury Data: Special Characteristics**

A multi-factor term structure model is the foundation for best practice asset and liability management, market risk, economic capital, interest rate risk in the banking book, stress-testing and the internal capital adequacy assessment process. The objective in this paper is to illustrate the derivation of a multi-factor Heath Jarrow and Morton model of the U.S. Treasury yield curve. As a by-product, the analysis has the potential to detect common data problems associated with yield curve histories and employs a standard methodology for quantification and resolution of those problems. Previous implementations of multi-factor Heath, Jarrow and Morton models have covered the following bond market sectors:

Australia

[Commonwealth Government Securities](#)

Canada	<a href="#">Government of Canada Securities</a>
Germany	<a href="#">German Bunds</a>
Japan	<a href="#">Japanese Government Bonds</a>
Singapore	<a href="#">Singapore Government Securities</a>
Spain	<a href="#">Spanish Government Bonds</a>
Sweden	<a href="#">Swedish Government Securities</a>
Thailand	<a href="#">Thai Government Securities</a>
United Kingdom	<a href="#">United Kingdom Government Bonds</a>
United States	<a href="#">U.S. Treasury Securities</a>

The first step in data model validation for the U.S. Treasury market is to examine the historical availability of bond yields over time. This availability is summarized in Table I.

Table I

Kamakura Corporation			
HJM 10 Factor Model			
U.S. Treasury			
Using Daily Data from January 1, 1962 through December 31, 2018			
Date of Analysis: March 29, 2019			
Number of Observations by Data Regime			
Data Regime	Start Date	End Date	Number of Observations
1, 3, 5 and 10 years	1/2/1962	6/30/1969	1,870
1, 3, 5, 7 and 10 years	7/1/1969	5/28/1976	1,722
1, 2, 3, 5, 7 and 10 years	6/1/1976	2/14/1977	178
1, 2, 3, 5, 7, 10 and 30 years	2/15/1977	12/31/1981	1,213
3 and 6 months with 1, 2, 3, 5, 7, 10 and 30 years	1/4/1982	9/30/1993	2,935
3 and 6 months with 1, 2, 3, 5, 7, 10, 20 and 30 years	10/1/1993	7/30/2001	1,960
1, 3 and 6 months with 1, 2, 3, 5, 7, 10, 20 and 30 years	7/31/2001	2/15/2002	135
1, 3 and 6 months with 1, 2, 3, 5, 7, 10, and 20 years	2/19/2002	2/8/2006	994
Second era: 1, 3 and 6 months with 1, 2, 3, 5, 7, 10, 20 and 30 years	2/9/2006	3/29/2018	3,041
1 day, 1, 3 and 6 months with 1, 2, 3, 5, 7, 10, 20 and 30 years	4/2/2018	10/15/2018	137
1 day, 1, 2, 3, and 6 months with 1, 2,3,5,7,10,20 and 30 years	10/16/2018	12/31/2018	51
Total Observations			14,236

The data shows that the U.S. Treasury's data history is typical in its occasional changes in "data regime," i.e. which of the maturities are available on a given date. By October 16, 2018, the U.S. Treasury was supplying data at 13 maturities.

Because the Heath, Jarrow and Morton analysis makes use of a yield curve with quarterly forward rate segments, the next step in data model validation is to fit quarterly forward rates to the raw coupon-bearing bond yields. The smoothness of the resulting forward rates will be a function of both the quality of the raw data from a smoothness point of view and the smoothness implied by the secondary smoothing process. To ensure the maximum smoothness from the secondary smoothing process, we use the maximum smoothness forward rate methodology of Adams and van Deventer [1994], as corrected in van Deventer and Imai [1996]. Adams and van Deventer show that the maximum smoothness method overcomes the problems of the cubic spline approach of McCulloch, and, unlike the Svensson [1994] approach, allows for a perfect fit to the raw data provided by the U.S. Department of the Treasury. See Jarrow [2014] for information on the problems with Svensson yield curve fitting.

We then conduct a visual inspection of the resulting forward rates implied by the raw data. A video of the daily quarterly forward rates (in red) versus the zero coupon bond yields (blue) implied by the U.S. Treasury data on every business day from 1962 through December 31, 2018 is given here:

<https://www.youtube.com/watch?v=aHxqTCWwPNg&t=23s>

The smoothness of the quarterly forward rate curve can be measured quantitatively using the quarterly forward rates implied by the U.S. Treasury yield curves. For a yield curve that consists of  $N$  quarterly forward rates, the discrete smoothness statistic at time  $t$   $Z_N(t)$  is the sum of the squared second differences in the forward rates, as explained by Adams and van Deventer [1994]. A closed form continuous smoothing statistic can also be calculated when the functional form of the continuous forward rate is known. The discrete smoothness statistic is given here:

$$Z_N(t) = \sum_{i=3}^N [(f_i(t) - f_{i-1}(t)) - (f_{i-1}(t) - f_{i-2}(t))]^2$$

A statistical comparison of smoothness for unmodified Japan Ministry of Finance data with data from the U.S. Department of the Treasury, both smoothed using the maximum smoothness forward rate approach, confirms that the first half of the Japanese Government Bond forward rate data set is much more volatile than the U.S. data, as the video shows. This video makes the daily comparison from 1974 to 2016 on a daily basis:

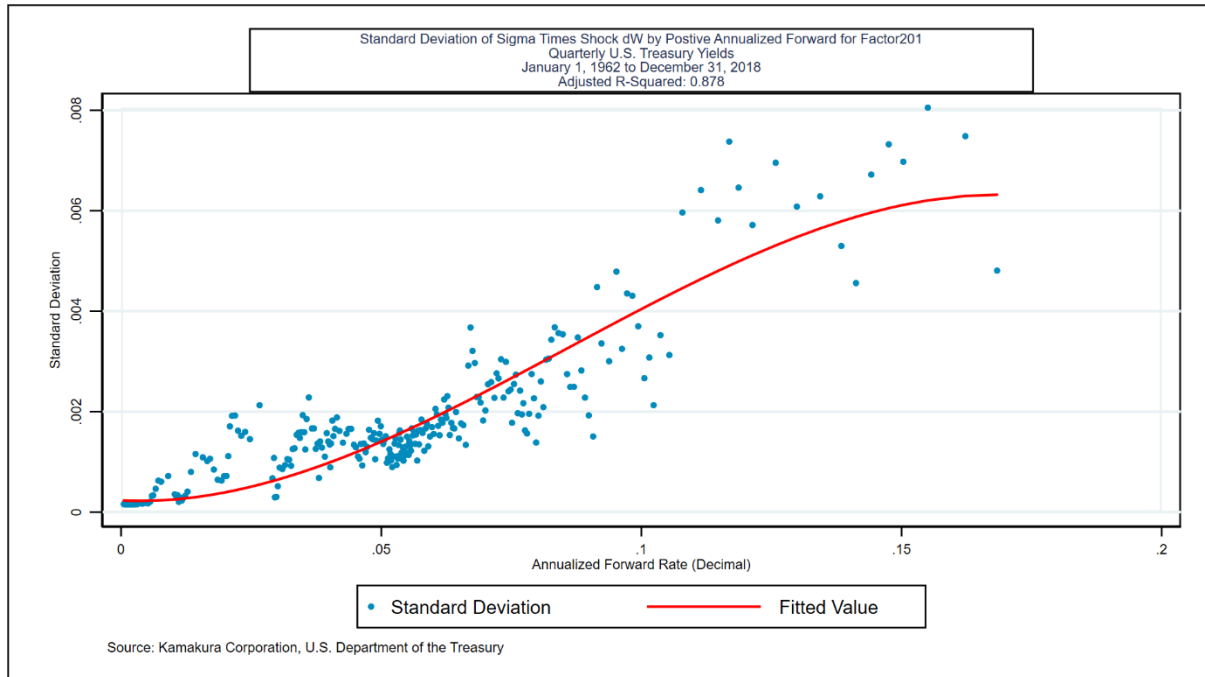
[https://www.youtube.com/watch?v=h\\_A1yYBQZ2c&list=PLFtDZOVcnk\\_oKk8bC4OnwQ\\_U94MCu9\\_EL&index=1](https://www.youtube.com/watch?v=h_A1yYBQZ2c&list=PLFtDZOVcnk_oKk8bC4OnwQ_U94MCu9_EL&index=1)

We conclude that the raw data provided by the Japan Ministry of Finance implies unrealistic movements in forward rates. The U.S. Treasury series, however, is realistically smooth and we use that data with confidence in what follows.

## II. Constant versus Stochastic Volatility

Constant volatility (“affine”) term structure models are commonly used for their ease of simulation and estimation of “future expected rates” in order to determine the “term premium” in current yields. Prominent examples are Adrian, Crump and Moench [2013], Kim and Wright [2005], and Duffie and Kan [1996]. On the other hand, the weight of the empirical evidence in most of the countries studied to date indicates that interest rate volatility does vary by the level of the corresponding forward rate. To illustrate that fact, we studied the shortest forward rate on the U.S. Treasury curve on a daily basis from January 2, 1962 through December 31, 2018. We ordered the data from lowest forward rate level to highest forward rate level. We formed non-overlapping groups of 25 observations each and calculated both the standard deviation of 91-day forward rate changes and the mean beginning-of-period forward rate in each group. The results are plotted in Exhibit III:

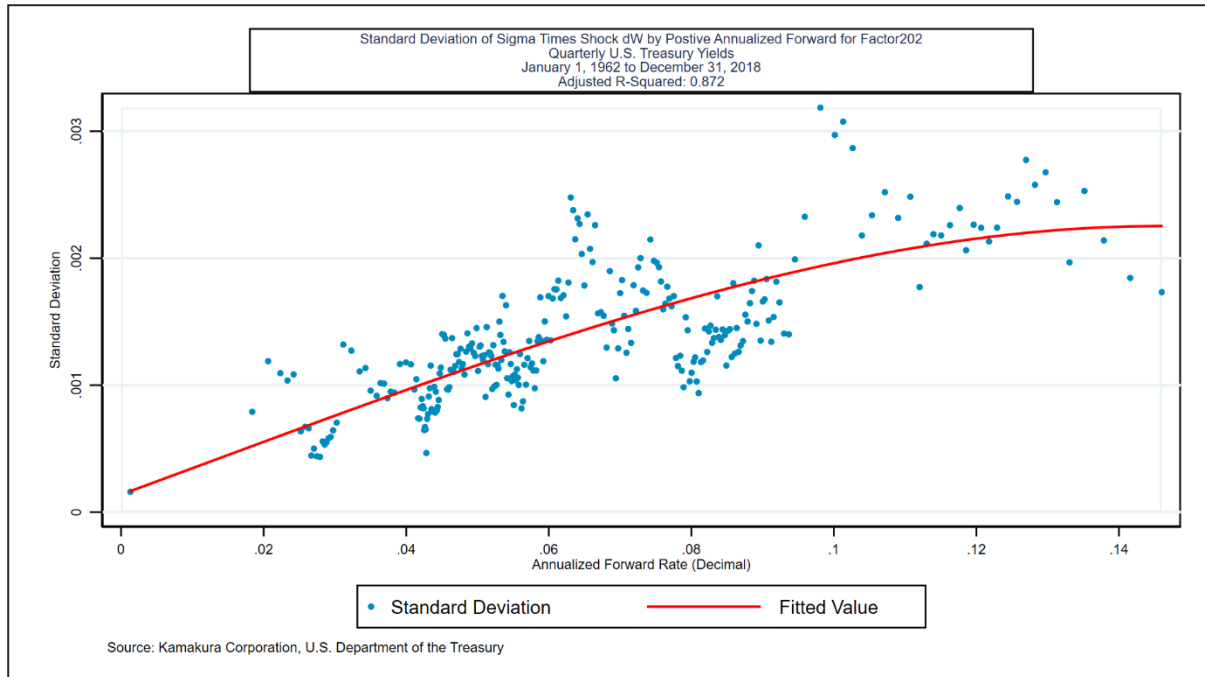
### Exhibit III



A cubic function of annualized forward rates explains 87.8% of the variation in the standard deviation of forward rate changes for these ordered groups. This is the volatility function used when extracting the first random factor driving the U.S. Treasury curve. Note that the right-hand side of the curve has been constrained to have a first derivative of zero at a high level of rates.<sup>2</sup> The rise in volatility in higher rate environments has been confirmed in the government securities markets for Australia, Canada, Germany, Japan, Singapore, Spain, Sweden, the United Kingdom, and the United States. Thailand, where interest rates have moved in a relatively narrow band, is the only exception so far. Exhibit IV shows the results for the second risk factor in the U.S. Treasury market, the idiosyncratic movements in the quarterly forward rate maturing in 10 years:

<sup>2</sup> This constraint is one method for imposing the cap in stochastic volatilities suggested by Heath, Jarrow and Morton [Econometrica, 1992] to prevent a positive possibility of (a) infinitely high rates or (more practically) (b) unrealistically high rates.

## Exhibit IV



The cubic stochastic volatility specification explains 87.2% of the observed variation in forward rate volatility in the quarterly forward rate maturing at the 10-year point on the U.S. Treasury yield curve. We have imposed the same constraint on the first derivative and require that the fitted volatility not be less than the observed volatility when interest rates are negative, which we discuss later in this section.

Exhibit V shows the historical movements in U.S. Treasury zero coupon yields over the historical period studied:

## Exhibit V

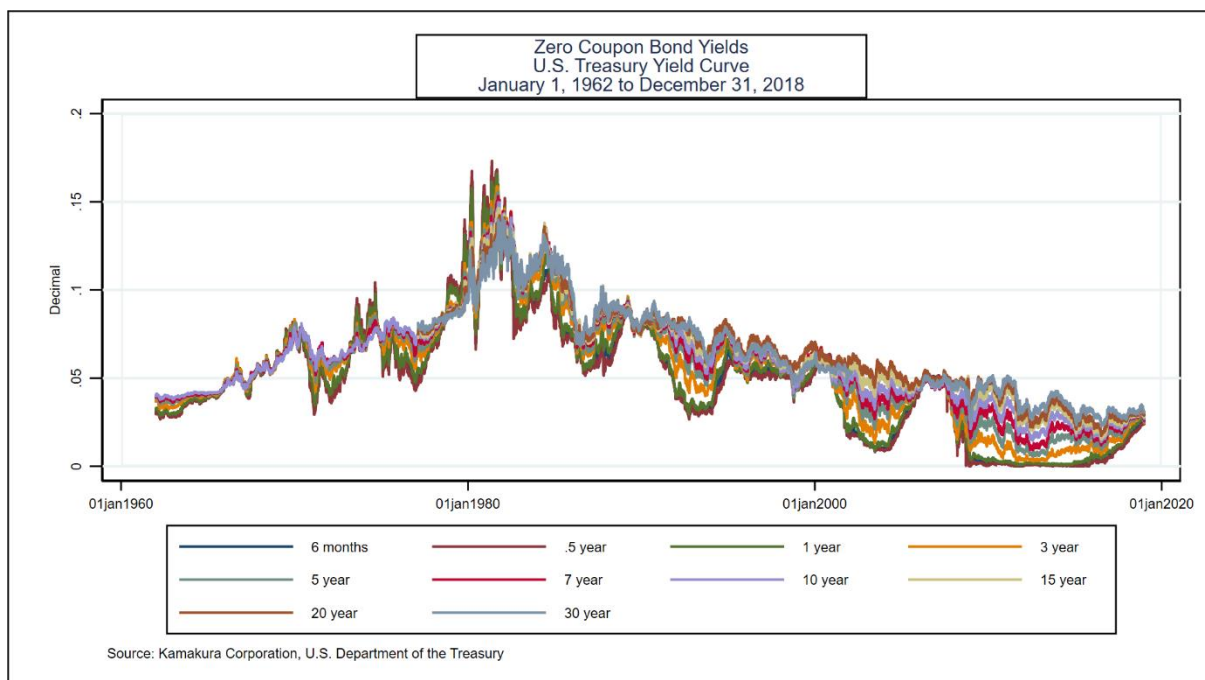
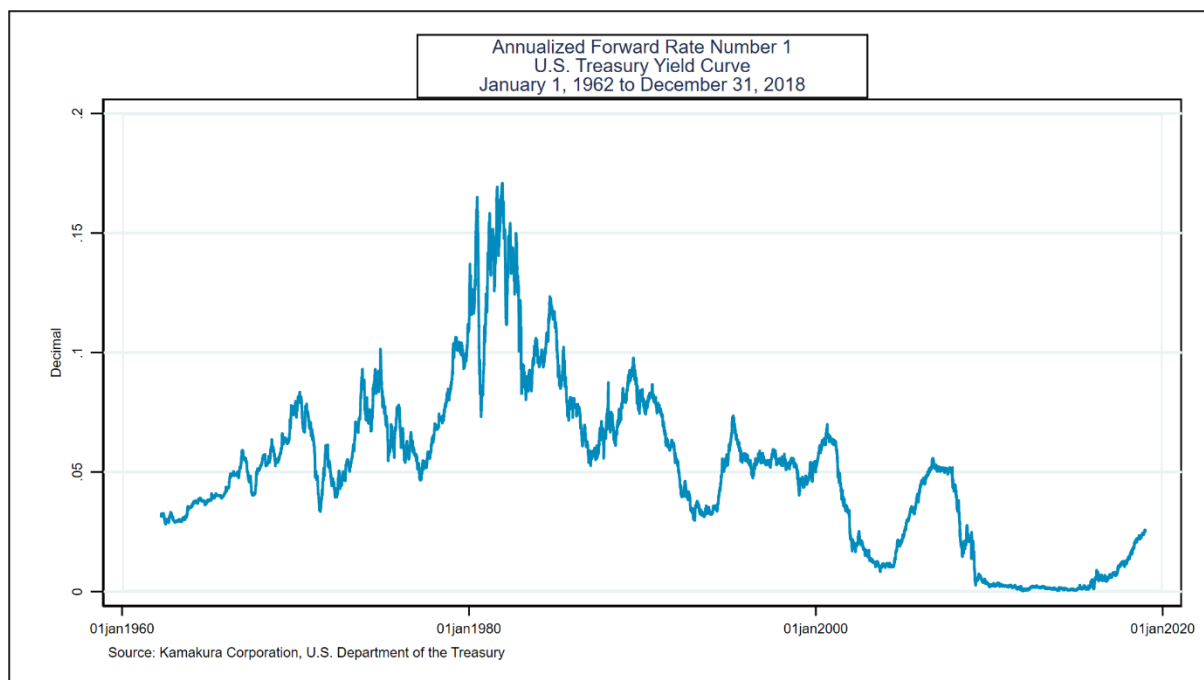


Exhibit VI below shows the evolution of the first quarterly forward rate (the forward that applies from the 91<sup>st</sup> day through the 182<sup>nd</sup> day) over the same time period:

## Exhibit VI



We use three statistical tests to determine whether or not the hypothesis of normality for forward rates and zero coupon bond yields should be rejected at the 5% level: the [Shapiro-Wilk](#) test, the [Shapiro-Francia](#) test, and the [skew test](#), all of which are available in common statistical packages. The results of these tests are summarized in Table II:

Table II

Kamakura Corporation HJM 10 Factor Model U.S. Treasury Using Daily Data from January 1, 1962 through December 31, 2018 Date of Analysis: January 9, 2019											
NORMALITY OF ZERO COUPON BOND YIELD ABSOLUTE LEVELS AND CONTINUOUSLY COMPOUNDED CHANGES IN FORWARD RETURNS P-values for Null Hypothesis that Zero Coupon Bond Yields are Normally Distributed           P-values for Null Hypothesis that Discrete Changes in Forward Returns Are Normally Distributed											
								Z Yield Result		Return Result	
								Is Normality Hypothesis Rejected?		Is Normality Hypothesis Rejected?	
Quarter	Shapiro Wilk Test	Shapiro Francia Test	Skew Test	Quarter	Shapiro Wilk Test	Shapiro Francia Test	Skew Test				
1	0.000%	0.000%	0.000%	1	0.000%	0.000%		Yes		Yes	
2	0.000%	0.000%	0.000%	2	0.000%	0.000%		Yes		Yes	
3	0.000%	0.000%	0.000%	3	0.000%	0.000%		Yes		Yes	
4	0.000%	0.000%	0.000%	4	0.000%	0.000%		Yes		Yes	
5	0.000%	0.000%	0.000%	5	0.000%	0.000%		Yes		Yes	
6	0.000%	0.000%	0.000%	6	0.000%	0.000%	0.000%	Yes		Yes	
7	0.000%	0.000%	0.000%	7	0.000%	0.000%	0.000%	Yes		Yes	
8	0.000%	0.000%	0.000%	8	0.000%	0.000%	0.000%	Yes		Yes	
9	0.000%	0.000%	0.000%	9	0.000%	0.000%	0.000%	Yes		Yes	
10	0.000%	0.000%	0.000%	10	0.000%	0.000%	0.000%	Yes		Yes	
11	0.000%	0.000%	0.000%	11	0.000%	0.000%	0.000%	Yes		Yes	
12	0.000%	0.000%	0.000%	12	0.000%	0.000%	0.000%	Yes		Yes	
13	0.000%	0.000%	0.000%	13	0.000%	0.000%	0.000%	Yes		Yes	
14	0.000%	0.000%	0.000%	14	0.000%	0.000%	0.000%	Yes		Yes	
15	0.000%	0.000%	0.000%	15	0.000%	0.000%	0.000%	Yes		Yes	
16	0.000%	0.000%	0.000%	16	0.000%	0.000%	0.000%	Yes		Yes	
17	0.000%	0.000%	0.000%	17	0.000%	0.000%	0.000%	Yes		Yes	
18	0.000%	0.000%	0.000%	18	0.000%	0.000%	0.000%	Yes		Yes	
19	0.000%	0.000%	0.000%	19	0.000%	0.000%	0.000%	Yes		Yes	
20	0.000%	0.000%	0.000%	20	0.000%	0.000%	0.000%	Yes		Yes	
21	0.000%	0.000%	0.000%	21	0.000%	0.000%	0.000%	Yes		Yes	
22	0.000%	0.000%	0	22	0.000%	0.000%	0.000%	Yes		Yes	
23	0.000%	0.000%	0	23	0.000%	0.000%	0.000%	Yes		Yes	
24	0.000%	0.000%	0.000%	24	0.000%	0.000%	0.000%	Yes		Yes	

Table II above shows the p-values for these three statistical tests for the first 24 quarterly maturities. We conduct the test for each quarter out to 30 years, the longest maturity used in the smoothing process. The null hypothesis of normality is rejected by all 3 tests for 120 of the 120 quarterly zero coupon yield maturities. For quarterly changes in forward rates, the null hypothesis of normality is again rejected by all 3 tests for all 120 of the 120 maturities for changes in forward rates. This is a powerful rejection of the normality assumptions implicit in constant coefficient or “affine” term structure models. In most of the other countries studied, the hypothesis of normality has been rejected strongly as well. Given these results, we proceed with caution on the implementation of the affine model.

In Chapter 3 of [Advanced Financial Management](#) (second edition, 2013), van Deventer, Imai and Mesler analyze the frequency with which U.S. Treasury forward rates move up together, down together or remain unchanged. This exercise informs the Heath, Jarrow and Morton parameter fitting process and is helpful for the model validation questions posed in the Appendix. We perform the yield curve shift analysis using 14,236 days of quarterly forward rates for the U.S. Treasury yield curve. We analyze the daily shifts in the forward rates on each business day from January 2, 1962 through December 31, 2018. The results are given in Table III:

Table III

<b>Kamakura Corporation</b> <b>HJM 10 Factor Model</b> <b>U.S. Treasury</b> <b>Using Daily Data from January 1, 1962 through December 31, 2018</b> <b>Date of Analysis: January 9, 2019</b>		
<b>Type of Yield Shift</b>	<b>Number of Observations</b>	<b>Percent of Observations</b>
<b>All yields shift up</b>	1,546	10.86
<b>All yields shift down</b>	816	5.73
<b>All yields are unchanged</b>	3	0.02
<b>Yield curve twists</b>	11,871	83.39
<b>Total</b>	14,236	100.00

Kamakura Corporation, U.S. Department of the Treasury

Yield curve shifts were all positive, all negative, or all zero 10.86%, 5.73%, and 0.02% of the time, a total of 16.61% of all business days. The predominant yield curve shift was a twist, with a mix of positive changes, negative changes, or zero changes. These figures are similar to those for the Japanese Government Bond, German Bund, Government of Canada, and United Kingdom Government Bond yield curves. These twists, which happen 83.39% of the time in the U.S., cannot be modeled accurately with the conventional implementation of one factor term structure models.

Another important aspect of yield curves is the number of local minima and maxima that have occurred over the modeling period. The results for the U.S. Treasury Market are given in Table IV:

Table IV

**Analysis of Number of Local Minima and Maxima Each Day**

<b>Number of Humps</b>	<b>Number of Observations</b>	<b>Percent of Observations</b>
<b>0 local minimum and maximum</b>	4,680	32.87
<b>1</b>	3,305	23.22
<b>2</b>	3,021	21.22
<b>3</b>	1,321	9.28
<b>4</b>	697	4.90
<b>5</b>	729	5.12
<b>6</b>	194	1.36
<b>7</b>	277	1.95
<b>8</b>	12	0.08
<b>9</b>	0	0.00
<b>10 or more</b>	0	0.00

Kamakura Corporation, U.S. Department of the Treasury

The number of days with 0 or 1 humps (defined as the sum of local minima and maxima on that day's yield curve) was 56.09% of the total observations in the data set.

Finally, before proceeding, we count the number of occurrences of negative rates for each forward rate segment of the yield curve over the history provided by the U.S. Department of the Treasury and report on the observed 91-day volatility of forward rates when the start of the period annualized forward rate is negative, zero, and positive.

Table V

<b>Kamakura Corporation</b>				
<b>HJM 10 Factor Model</b>				
<b>U.S. Treasury</b>				
<b>Using Daily Data from January 1, 1962 through December 31, 2018</b>				
<b>Date of Analysis: January 9, 2019</b>				
<b>Source: Kamakura Corporation, U.S. Department of the Treasury</b>				
<b>Count of Negative Quarterly Forward Rates</b>				
<b>Quarter Number</b>	<b>Observations</b>	<b>Negative</b>	<b>Zero</b>	<b>Positive</b>
1	14236	0	0	14236
2	14236	0	0	14236
3	14236	0	0	14236
4	14236	0	0	14236
5	14236	0	0	14236
6	14236	0	0	14236
7	14236	0	0	14236
8	14236	0	0	14236
9	14236	0	0	14236
10	14236	0	0	14236
11	14236	0	0	14236
12	14236	0	0	14236
13	14236	0	0	14236
14	14236	0	0	14236
15	14236	0	0	14236
16	14236	0	0	14236
17	14236	0	0	14236
18	14236	0	0	14236
19	14236	0	0	14236
20	14236	0	0	14236
21	14236	0	0	14236
22	14236	0	0	14236
23	14236	0	0	14236
24	14236	0	0	14236

The U.S. Treasury, in part because of Department policy outlined on its website, has not reported any observations for which quarterly forward rates have been negative.

The same table for Japan shows that the volatility of forward rate changes can be calculated for the first forward rate on 303 observation dates when that forward rate was negative. The 91-day volatility was 0.018553%. For the 10,425 observation dates for which the first forward rate was positive, the volatility over 91 days was 0.135174%. For other forward rate maturities, the volatility of the negative rate observations gradually increased with maturity. We emphasize two obvious points: rates can be and have been negative, and, when rates hit zero and below, interest rate volatility is not zero. It is positive but at a lower level than for positive forward rate observations.

### **III. Fitting Heath, Jarrow and Morton Parameters**

A simple first step in constructing a multi-factor Heath, Jarrow and Morton model is to conduct principal components analysis on the forward rates that make up the relevant yield curve. For the U.S. Treasury market, at its longest maturity, these quarterly segments consist of one three-month spot rate and 119 forward rates. Over 9,344 observations, the principal components analysis indicates in Table VI that the first factor explains only 53.32% of the movement in forward rates over the full curve. For a high degree of explanatory power, the principal components analysis indicates that 8 to 12 factors will be necessary.

Table VI

Principal components/correlation	Number of obs	=	9,344
	Number of comp.	=	16
	Trace	=	119
Rotation: (unrotated = principal)	Rho	=	1.0000

Component	Eigenvalue	Difference	Proportion	Cumulative
Comp1	63.4491	27.9271	0.5332	0.5332
Comp2	35.522	26.7363	0.2985	0.8317
Comp3	8.78576	3.14577	0.0738	0.9055
Comp4	5.63999	2.7375	0.0474	0.9529
Comp5	2.90249	1.61448	0.0244	0.9773
Comp6	1.28801	.537407	0.0108	0.9881
Comp7	.750599	.38833	0.0063	0.9944
Comp8	.362268	.203748	0.0030	0.9975
Comp9	.158521	.0760716	0.0013	0.9988
Comp10	.082449	.0373504	0.0007	0.9995
Comp11	.0450986	.0349406	0.0004	0.9999
Comp12	.010158	.00756479	0.0001	1.0000

With this analysis as background, we begin the Heath, Jarrow and Morton fitting process.

In the studies done so far, the number of statistically significant factors are summarized below:

Australia:	Commonwealth Government Securities,	14 factors
Canada:	Government of Canada Securities,	12 factors
Germany:	Bunds,	14 factors
Japan:	Japanese Government Bonds	8 factors
Singapore:	Singapore Government Securities	9 factors
Spain	Spanish Government Securities	11 factors
Sweden:	Swedish Government Securities,	11 factors
Thailand	Thai Government Securities	11 factors
United Kingdom:	Government Securities,	14 factors
United States:	Treasury Securities, prior version	10 factors

Note that our prior term structure model fitting exercise for the U.S. Treasury market resulted in 10 statistically significant factors through December 31, 2016.

We now fit a multi-factor [Heath, Jarrow and Morton](#) model to U.S. Treasury zero coupon yield data from January 2, 1962 to December 31, 2018. For computational simplicity, we compress the data regimes numbered in the right-hand column of Table I to two regimes. The first is for observations where no maturity longer than 10 years was reported. The second is for those observations where no maturity longer than 30 years was reported.

The procedures used to derive the parameters of a Heath, Jarrow and Morton model are described in detail in Jarrow and van Deventer (June 16, 2015 and May 5, 2017).

We followed these steps to estimate the parameters of the model:

- We extract the zero coupon yields and zero coupon bond prices for all quarterly maturities out to 30 years for all daily observations for which the 30 year zero coupon yield is available. For other observations, we extended the analysis to the longest maturity available, which varies by data regime. This is done using Kamakura Risk Manager, version 10.0, using the [maximum smoothness forward rate approach](#) to fill the quarterly maturity gaps in the zero coupon bond data.
- We use overlapping 91-day intervals to measure changes in forward rates, avoiding the use of “quarterly” data because of the unequal lengths of calendar quarters. Because overlapping observations trigger autocorrelation, “HAC” (heteroscedasticity and autocorrelation consistent) standard errors are used. The methodology is that of Newey-West with 91 day lags.
- We consider ten potential explanatory factors: the idiosyncratic portion of the movements in quarterly forward rates that mature in 6 months, 1 year, 1.5, 2, 3, 5, 7, 10, 20, and 30 years. Ten factors are required by the Bank for International Settlements [market risk guidelines](#) published in January 2016 and relevant to the Fundamental Review of the Trading Book.
- We calculate the discrete changes in forward returns as described in the parameter technical guide. Because the discrete changes are non-linear in the no-arbitrage framework of Heath, Jarrow and Morton, we use non-linear least squares to fit interest rate volatility.
- We use a different non-linear regression for each segment of the yield curve. We considered a panel-based approach, but we rejected it for two reasons: first, the movement of parameters as maturity lengthens is complex and not easily predictable before estimation; second, the residual unexplained error in forward rates is very, very small, so the incremental merit of the panel approach is minimal.
- We then begin the process of creating the orthogonalized risk factors that drive interest rates using the Gram-Schmidt procedure. These factors are assumed to be uncorrelated independent random variables that have a normal distribution with mean zero and standard deviation of 1.
- Because interest volatility is assumed to be stochastic, simulated out-of-sample forward rates will not in general be normally distributed. We also calculate constant volatility parameters and choose the most accurate from the constant volatility and stochastic volatility models estimated.
- In the estimation process, we added factors to the model as long as each new factor provided incremental explanatory power. The standard suite of models in both cases includes 1 factor, 2 factors, 3 factors, 6 factors and “all factors,” which varies by country.

We postulate that interest rate volatility for each forward rate maturity  $k$  is a cubic function of the annualized forward rate that prevails for the relevant risk factor  $j$  at the beginning of each 91-day period:

$$\sigma_{jk} = \max[b_{0,jk}, b_{0,jk} + b_{1,jk}f + b_{2,jk}f^2 + b_{3,jk}f^3] \text{ if } f > 0, \\ \sigma_{jk} = b_{0,jk} \text{ if } f \leq 0,$$

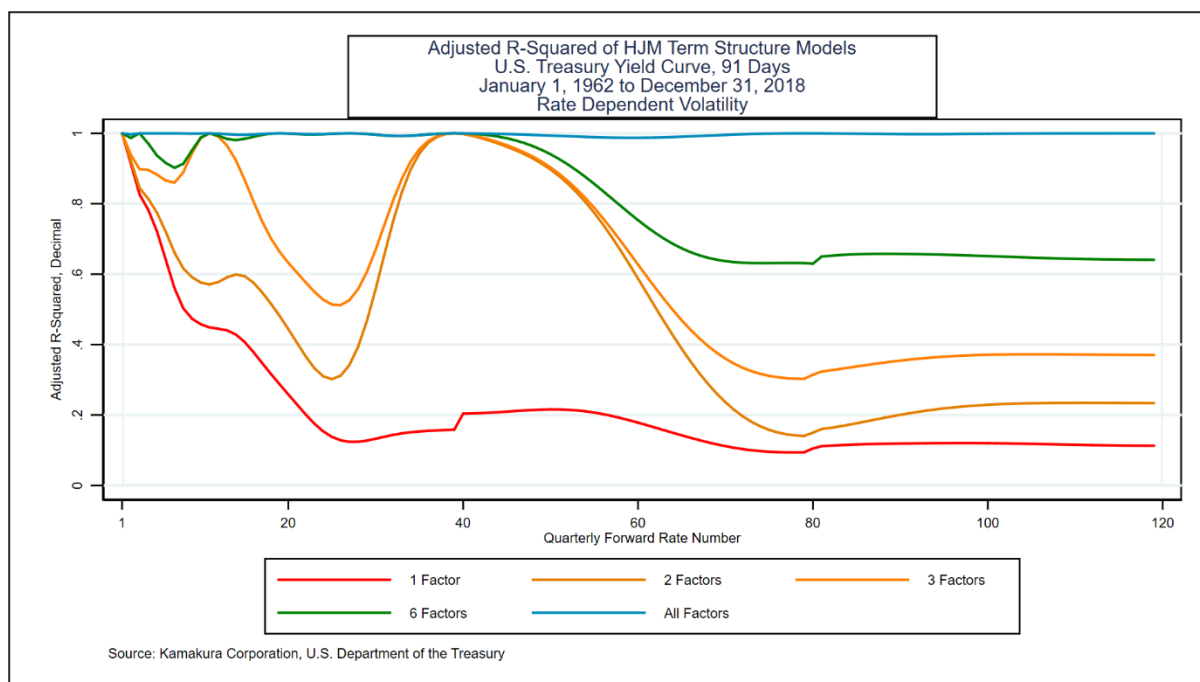
When the initial forward rate is negative, we postulate that interest rate volatility is a constant. Because of the Japan volatility data reported above, we expect  $b_{0,jk}$  to be close to 0.018553%.

We use the resulting parameters and accuracy tests to address the hypothesis that a one factor model is “good enough” for modeling U.S. Treasury yields in the Appendix. We report the accuracy results for 1, 2, 3, 6 and all (10) factors. The factors are the idiosyncratic variation in quarterly forward rates at each of 10 maturities. The factors, described by the maturity of the quarterly forward rate used, are added to the model in this order:

Factor 1:	6 months
Factor 2:	10 years
Factor 3:	3 years
Factor 4:	7 years
Factor 5:	1 year
Factor 6:	5 years
Factor 7:	2 years
Factor 8:	1.5 years
Factor 9:	30 years
Factor 10:	20 years

Exhibit VII summarizes the adjusted r-squared for the non-linear equations for each of the 119 quarterly forward rate segments that make up the U.S. Treasury yield curve:

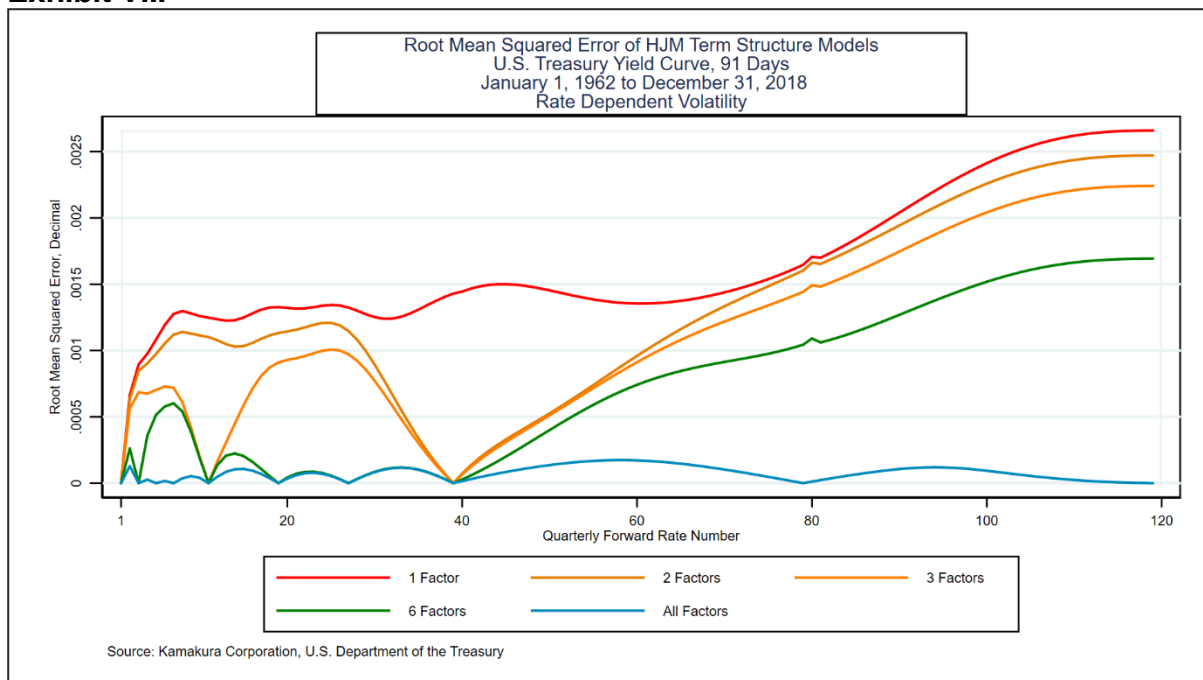
## Exhibit VII



The adjusted r-squared for the best practice model over each of the forward rates is plotted in blue and is near 100% for all 119 quarterly segments of the yield curve. The one factor model in red, by contrast, does a poor job of fitting 91-day movements in the quarterly forward rates. The adjusted r-squared is good, of course, for the first forward rate since the short rate is the standard risk factor in a one factor term structure model. Beyond the first quarter, however, explanatory power declines rapidly. The adjusted r-squared of the one factor model never exceeds 20% after the first 25 quarterly forward rates and is below that level at most maturities.

The root mean squared error for the 1, 2, 3, 6 and all (10) factor stochastic volatility model is shown in Exhibit VIII.

## Exhibit VIII



The root mean squared error for the 10 factor model is less than 0.015% at every maturity along the yield curve. This result should not come as a surprise to a serious analyst, because it is very similar to the results of the best practice Heath, Jarrow and Morton term structure models for Japanese Government Bonds, Government of Canada Bonds, United Kingdom Government Bonds, German Bunds, Australian Commonwealth Government Securities, Singapore Government Securities, Spanish Government Securities, Swedish Government Securities, and Thai Government Bond yields.

## Bayesian Considerations in Model Validation

Kamakura term structure model validation is conducted in the spirit of Bayesian iterative model building as outlined by Gelman et al. This quote<sup>3</sup> from Gelman et al [2013] explains the Bayesian estimation process:

“The process of Bayesian data analysis can be idealized by dividing it into the following three steps:

1. Setting up a full probability model—a joint probability distribution for all observable and unobservable quantities in a problem. The model should be consistent with knowledge about the underlying scientific problem and the data collection process.
2. Conditioning on the observed data: calculating and interpreting the appropriate posterior distribution—the conditional probability distribution of the unobserved quantities of ultimate interest, given the observed data.

<sup>3</sup> Gelman et al [2013], page 3.

3. Evaluating the fit of the model and the implications of the resulting posterior distribution: how well does the model fit the data, are the substantive conclusions reasonable, and how sensitive are the results to the modeling assumptions in step 1? In response, one can alter or expand the model and repeat the three steps.”

Jarrow and van Deventer go on to explain that the iterative process described above by Gelman et al is especially important in fitting Heath, Jarrow and Morton parameters for the following reasons:

- a. Negative interest rates have been observed in Japan, Hong Kong and many European countries, but many other countries, including the U.S., have yet to experience negative rates. In the U.S. case, the U.S. Department of the Treasury notes on its website that it overrides observed negative yields in the market with zero values.
- b. The “knowledge about the underlying scientific problem” from the historical data available is as follows: (1) negative rates are possible, (2) they are much less likely to occur than positive rates, (3) interest rate volatility that results when rates are negative is of high interest but the historical data is either limited or non-existent, depending on the country, and (4) an international data set would best shed light on this and other HJM issues.

There are other issues relevant to estimation:

- c. As noted by Heath, Jarrow and Morton [1992], stochastic volatility driven by interest rate levels must be capped to avoid a positive probability of infinitely high interest rates
- d. Subject to this cap, most market participants expect interest rate volatility to rise as rates rise and that the interest rate volatility that prevails when rates are negative represents the lowest level of volatility that would prevail. Historical experience with negative rates so far around the world makes it clear that interest rate volatility does not go to zero at any rate level.
- e. Most market participants believe that the empirical drift in forward rates that occurs (i.e. the change in observed empirical interest rates in the case where all interest rate shocks are zero) varies by the level of interest rates. The stochastic volatility model described in this paper assumes that empirical drift is a cubic function of annualized forward rates.

To summarize, a model validation effort in the Bayesian spirit would address at least these issues:

- Tests of smoothness of simulated curves
- Tests to confirm existence of negative rates in selected circumstances in the simulation
- Comparison of simulated risk neutral and empirical yields
- Time series distribution of simulated risk neutral and empirical yields

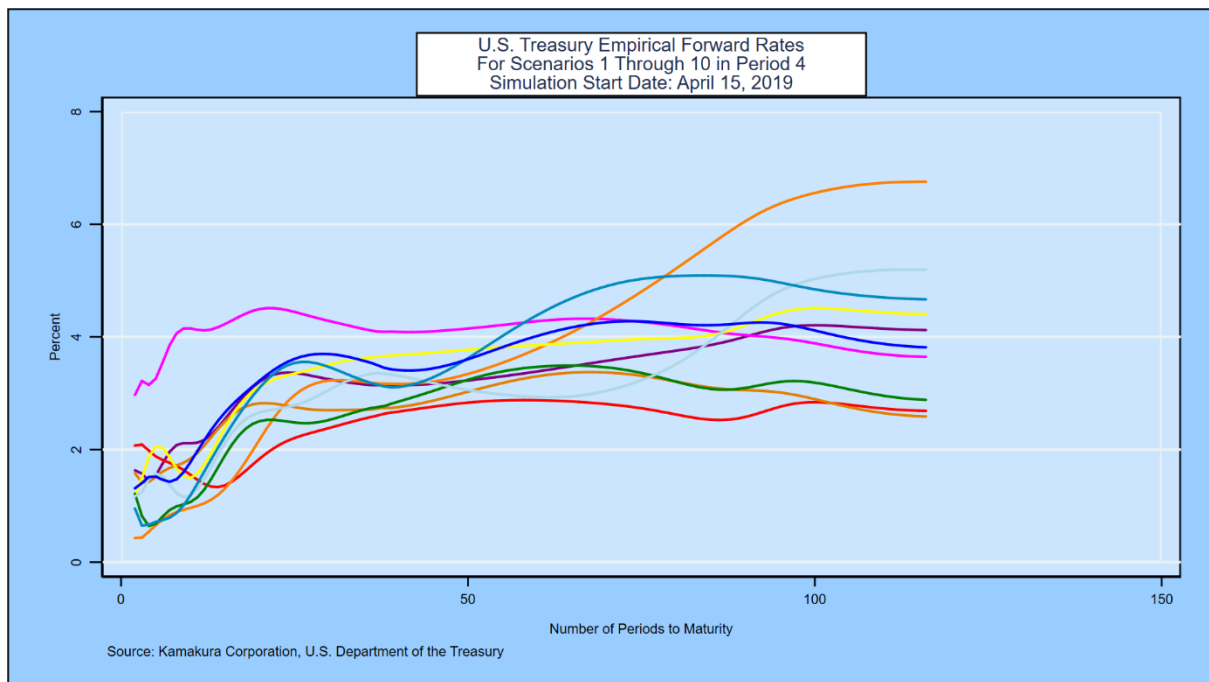
We conduct an inspection of these issues with the aid of a forward-looking out-of-sample simulation of U.S. Treasury yields with the following specifications:

- Yield curve: U.S. Treasury yields
- Date of yields: April 15, 2019
- Number of scenarios: 100,000
- Simulation time horizon: 30 years
- Simulation periodicity: Quarterly

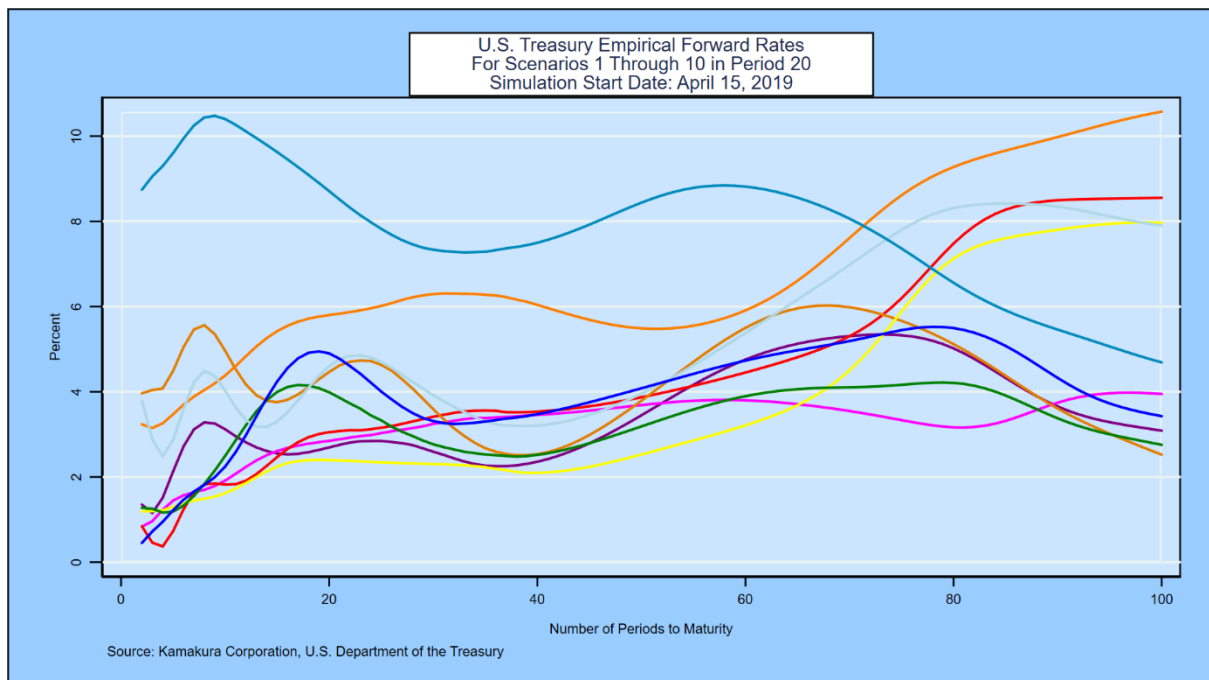
#### A. Smoothness Validation

First, we select a random sample of 10 scenarios at each time step and visually examine them for smoothness. We can also use the discrete formula for smoothness given above to identify any outliers and examine the scenarios in question.

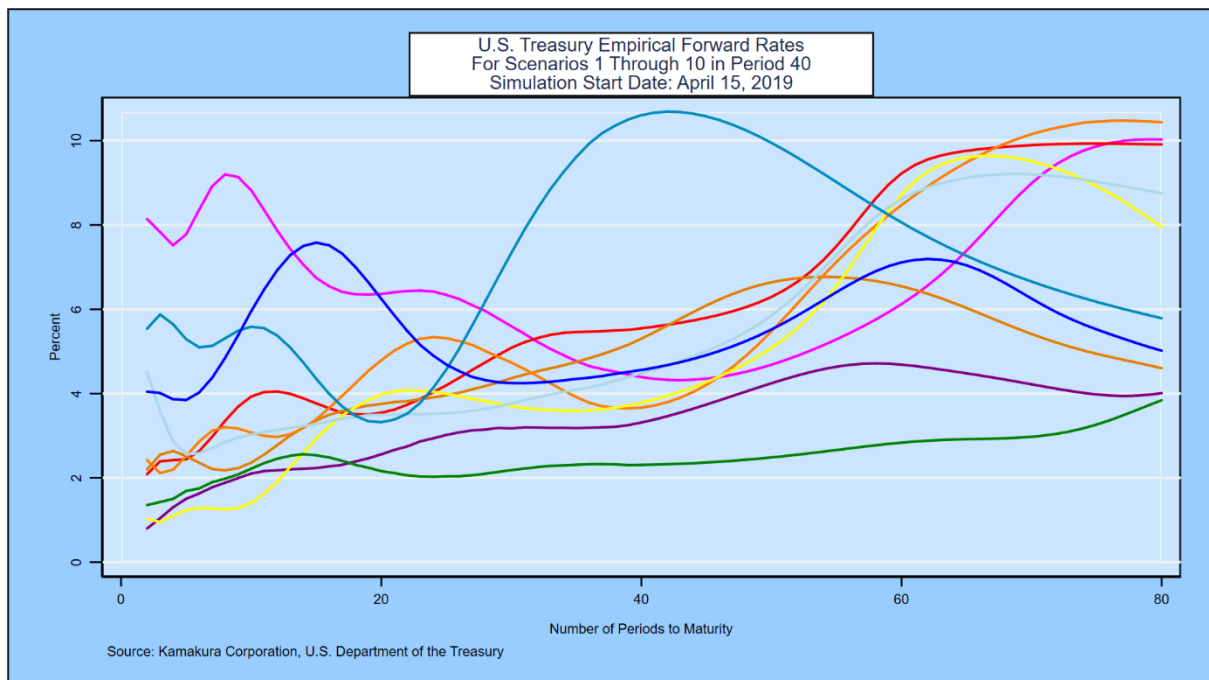
## Exhibit IX: 1 year



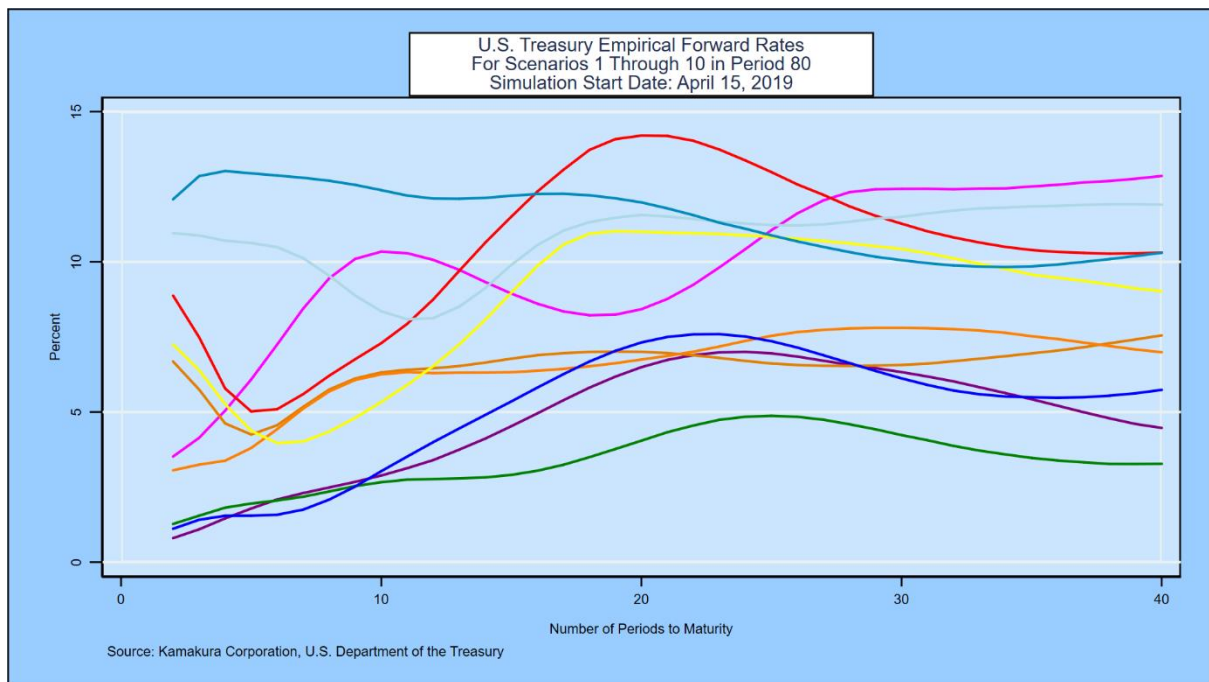
## Exhibit X: 5 years



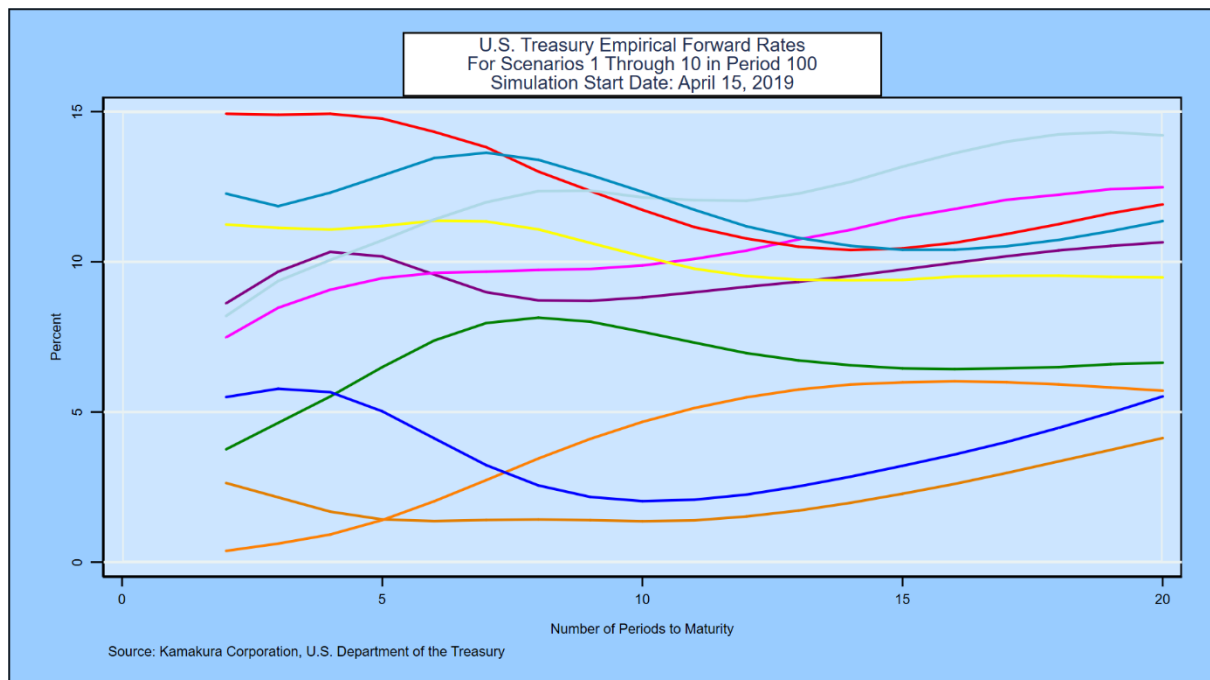
## Exhibit XI: 10 years



## Exhibit XII: 20 years



### Exhibit XIII: 25 years

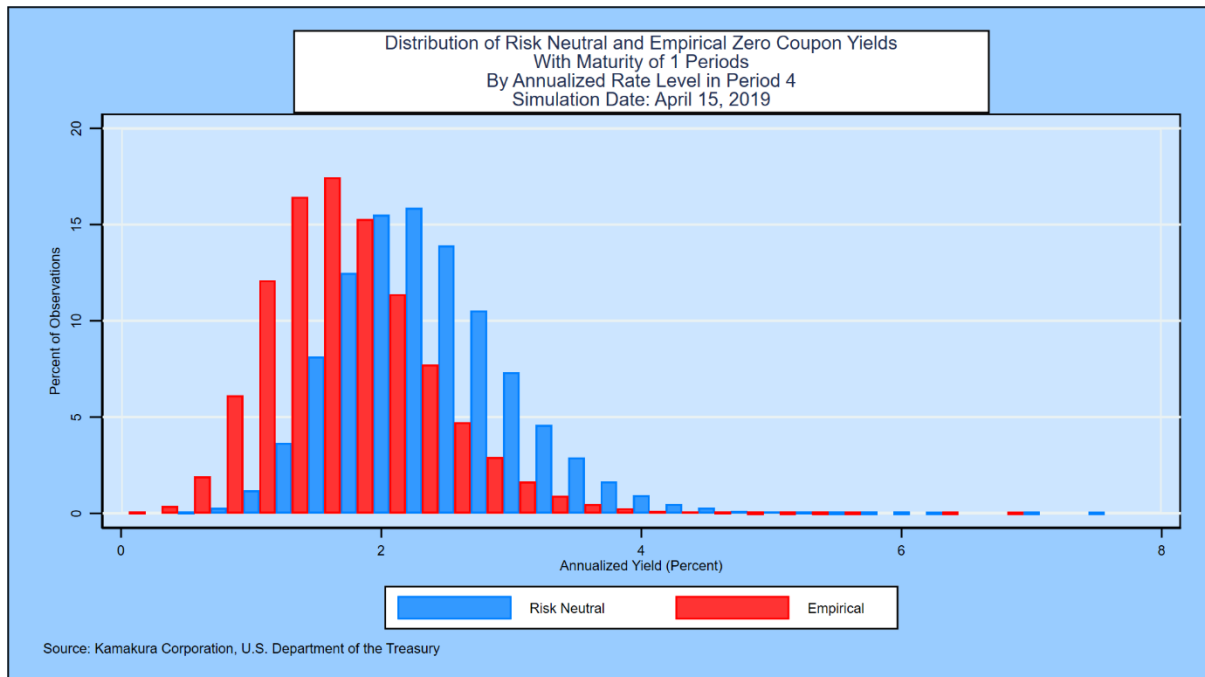


These graphs provide informal confirmation that nothing in the model estimation procedure has introduced artificial lumpiness in the simulated yield curves. A quantitative assessment of the smoothness of all 100,000 yield curves at each time step provides the more formal confirmation that the yield curves simulated are realistically smooth.

## B. Distribution of Simulated Risk Neutral and Empirical Rates

We now examine the probability distributions of risk neutral and empirical simulated rates at various maturities over time. We seek to detect visually any points in time at which the simulated distribution of yields is strange or unrealistic.

Exhibit XIV: Three Month U.S. Treasury Yields at 1 Year



## Exhibit XV: Three Month U.S. Treasury Yields at 5 Years

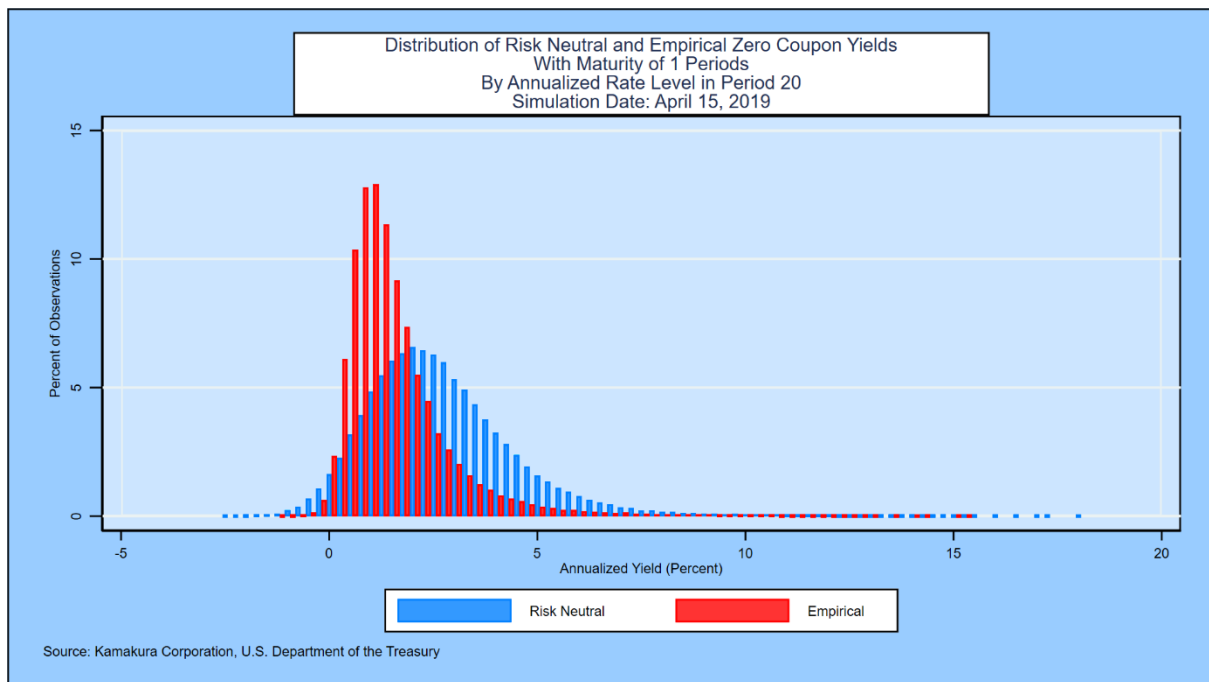
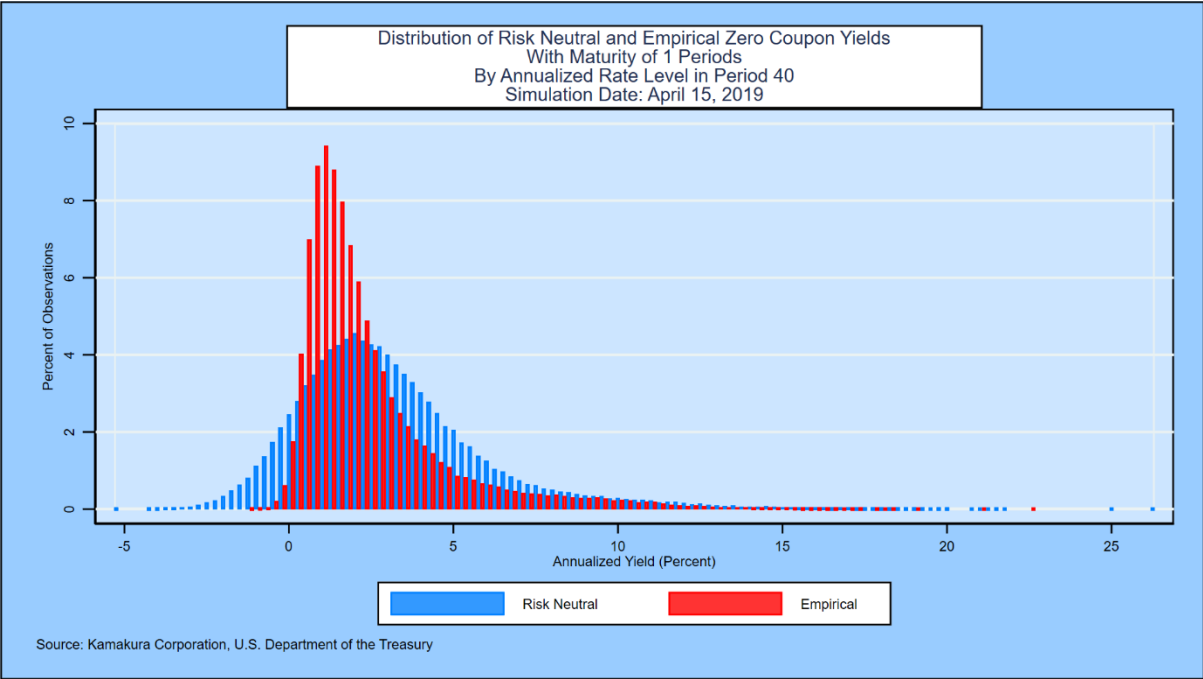
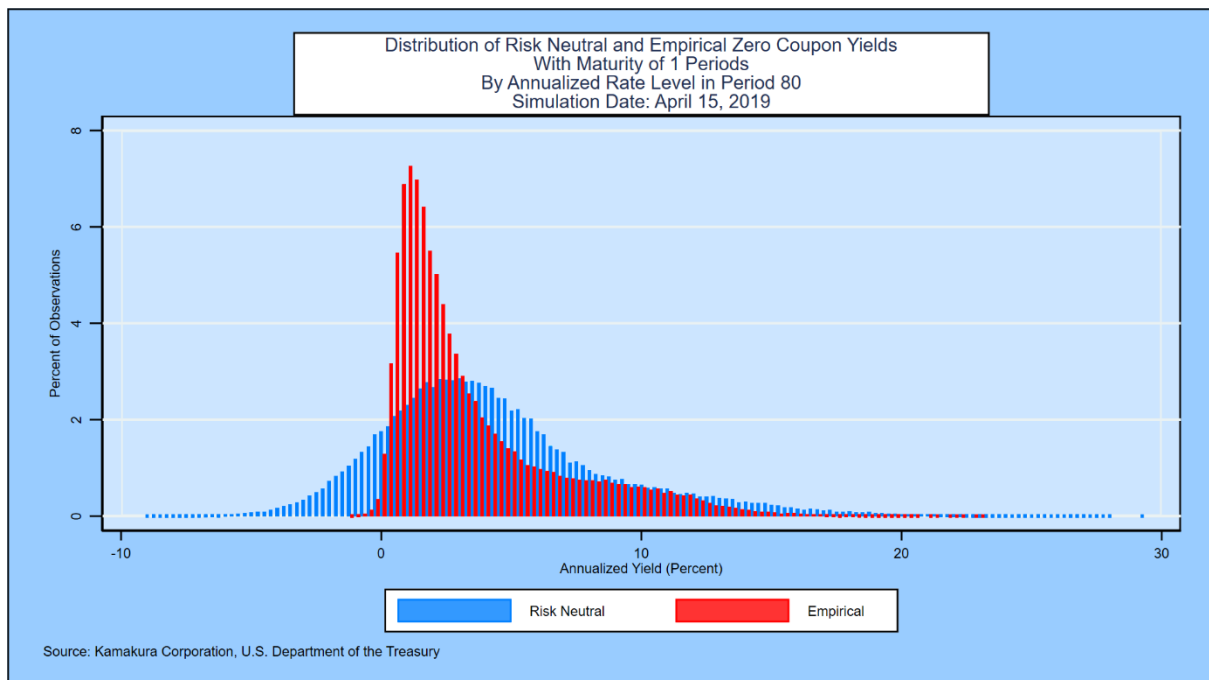


Exhibit XVI: Three Month U.S. Treasury Yields at 10 Years



## Exhibit XVII: Three Month U.S. Treasury Yields at 20 Years



## Exhibit XVIII: Three Month U.S. Treasury Yields at 25 Years

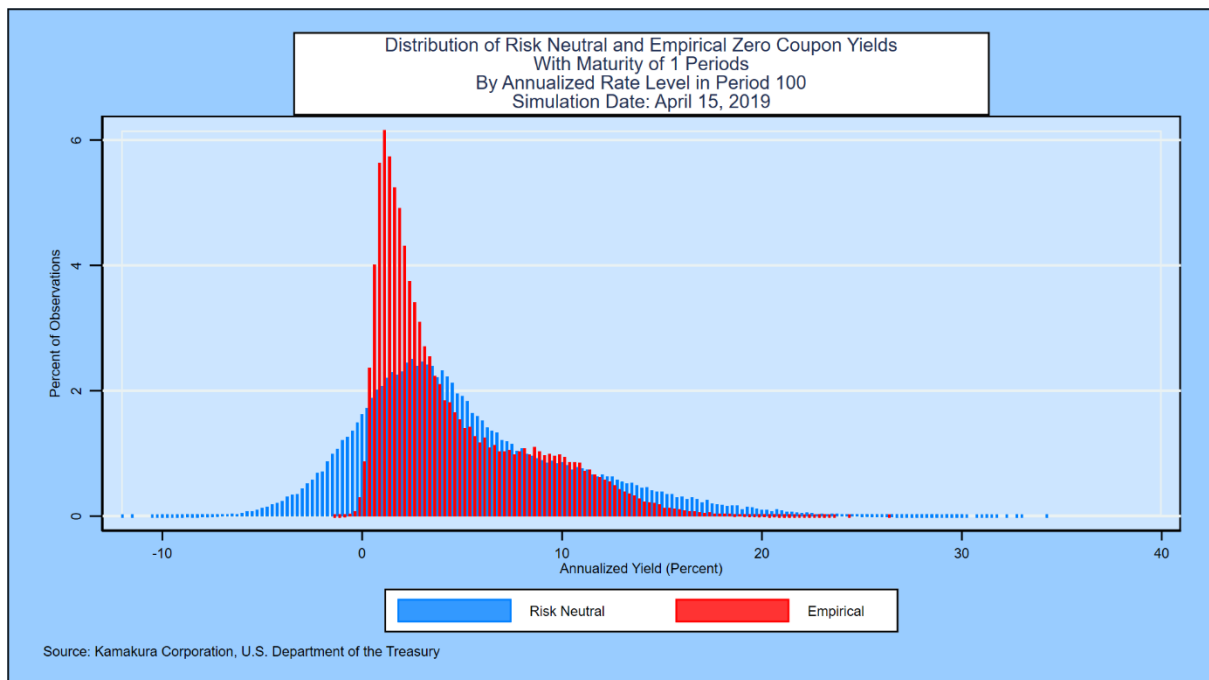
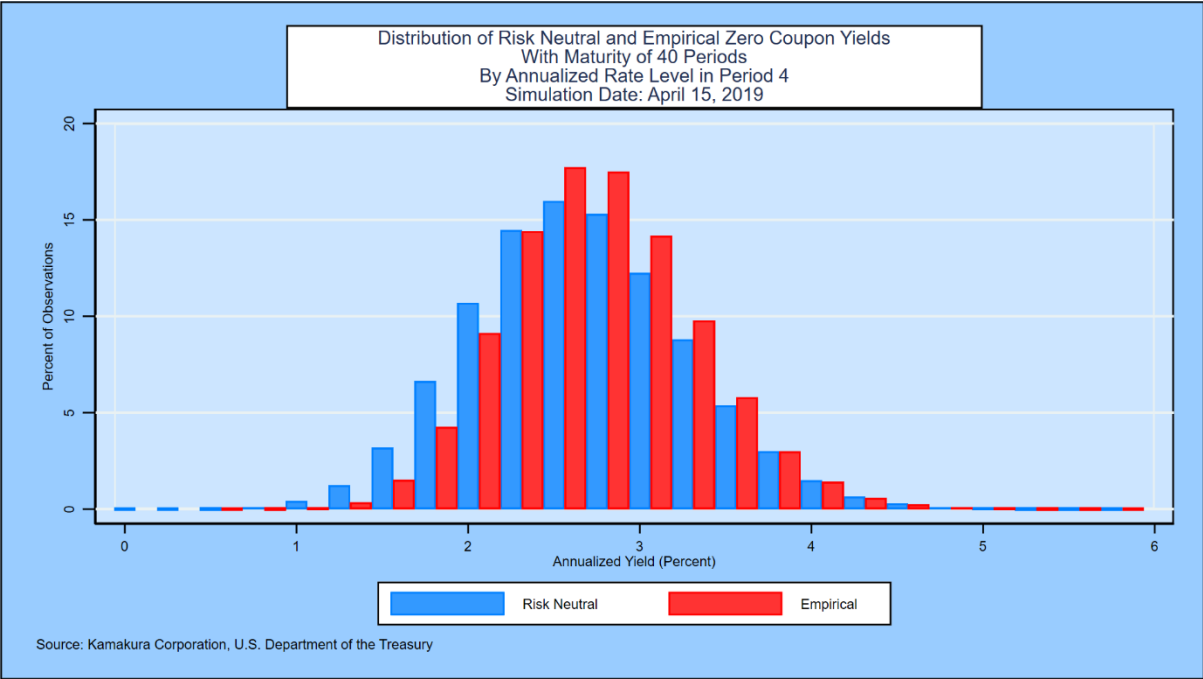
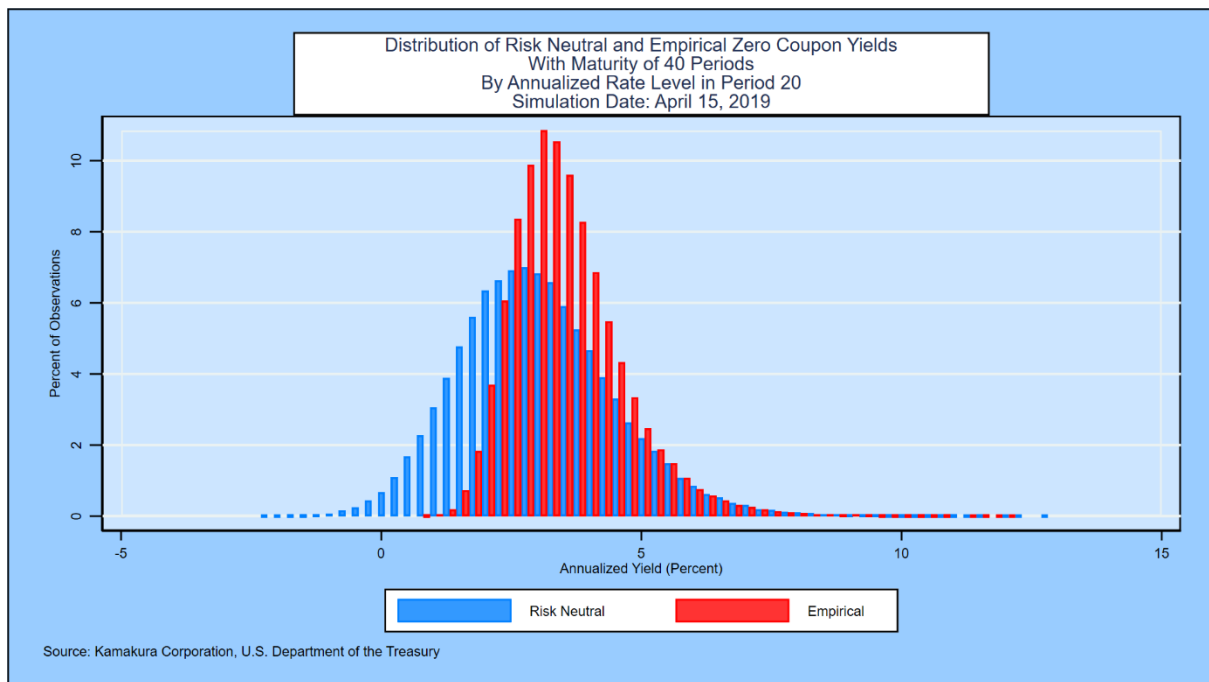


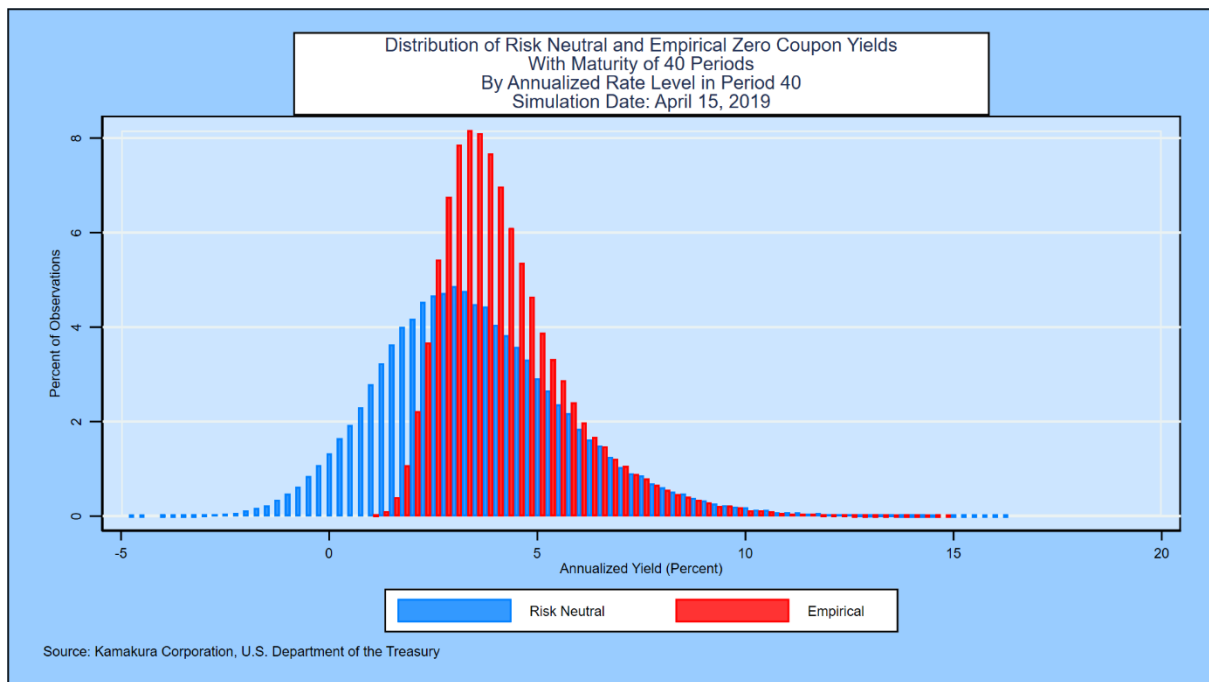
Exhibit XIX: 10 Year U.S. Treasury Yields at 1 Year



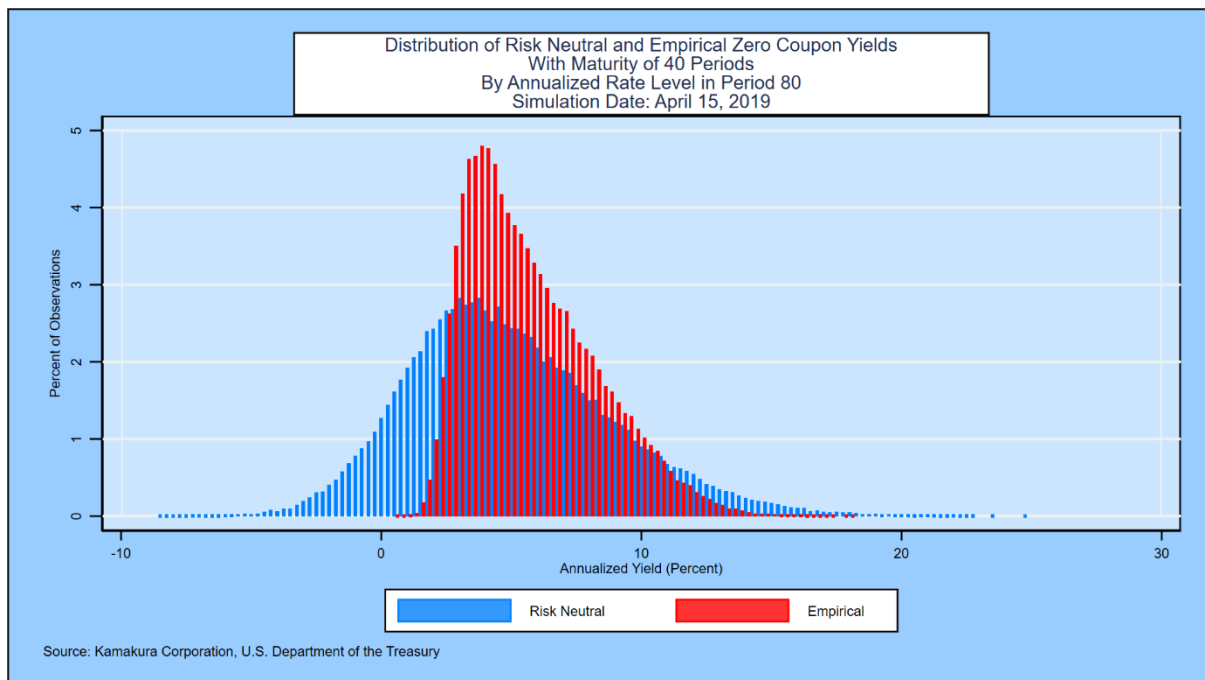
## Exhibit XX: 10 Year U.S. Treasury Yields at 5 Years



## Exhibit XXI: 10 Year U.S. Treasury Yields at 10 Years



## Exhibit XXII: 10 Year U.S. Treasury Yields at 20 Years



We conclude that the simulation is reasonable from multiple dimensions. Rates can be negative but (for empirical yields) the probability of negative rates is low. On the end of the spectrum, rates do rise to the 20% range but with a very low probability.

### C. Time Series Distribution of Simulated Yields

We now plot the time series graphs of the mean, median, high, low and various percentiles for empirical rates.

## Exhibit XXIII: 3 Month Yields

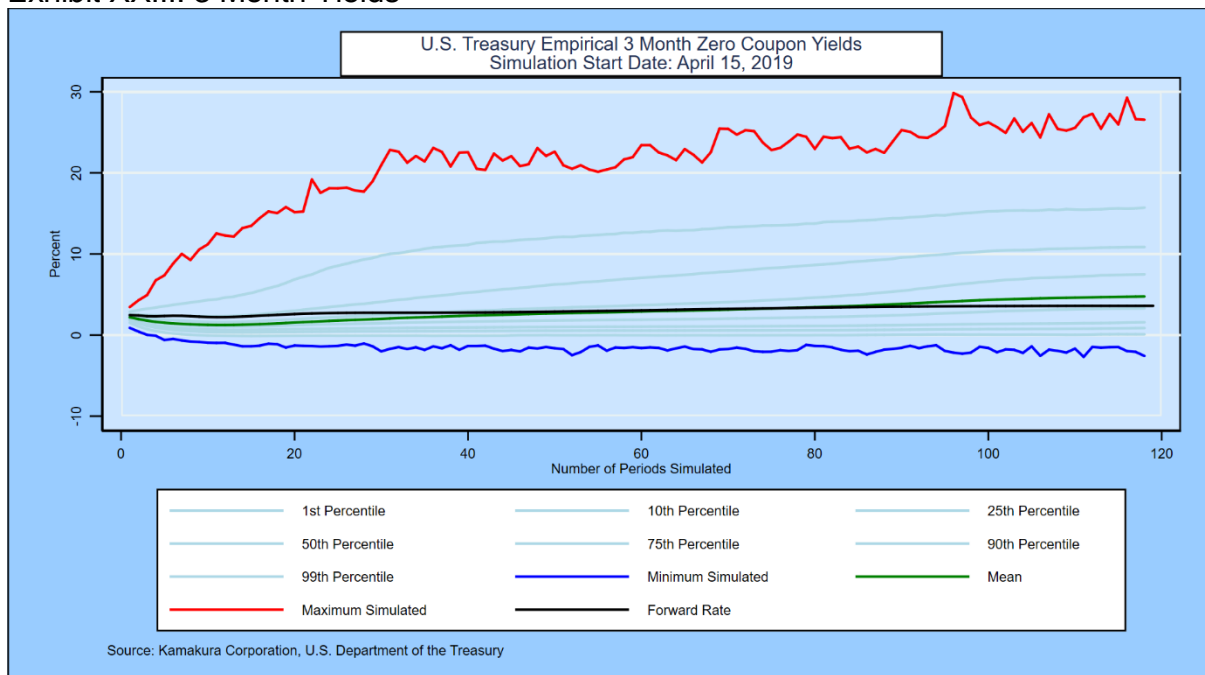
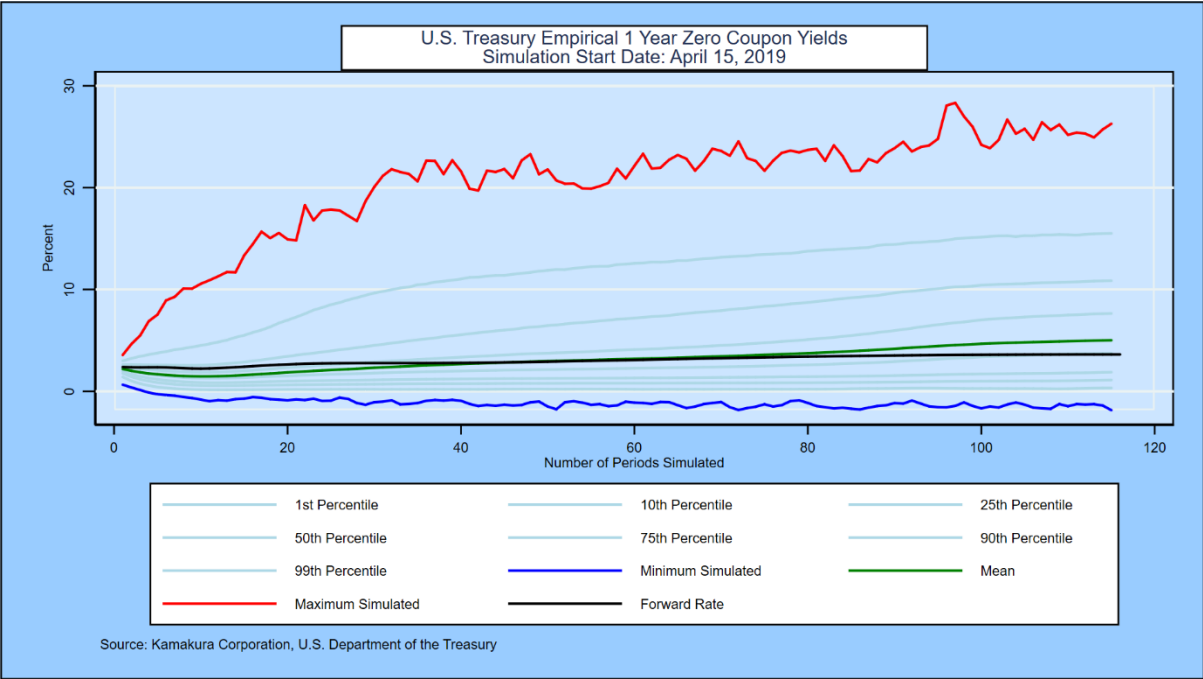
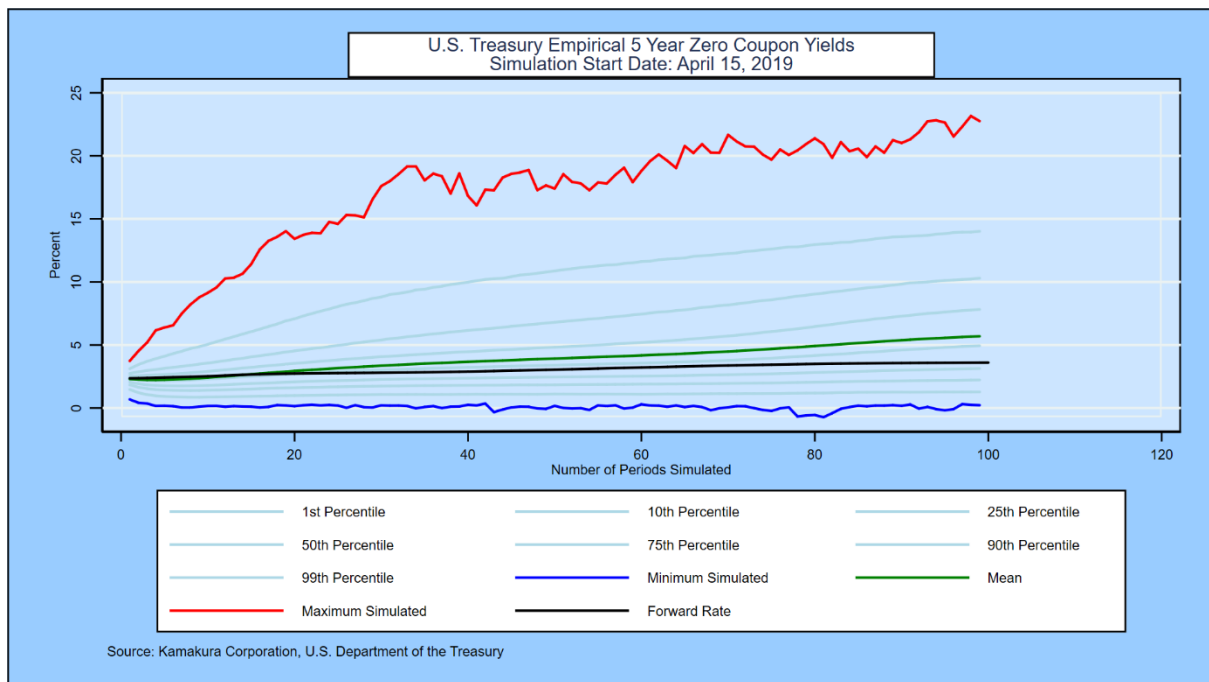


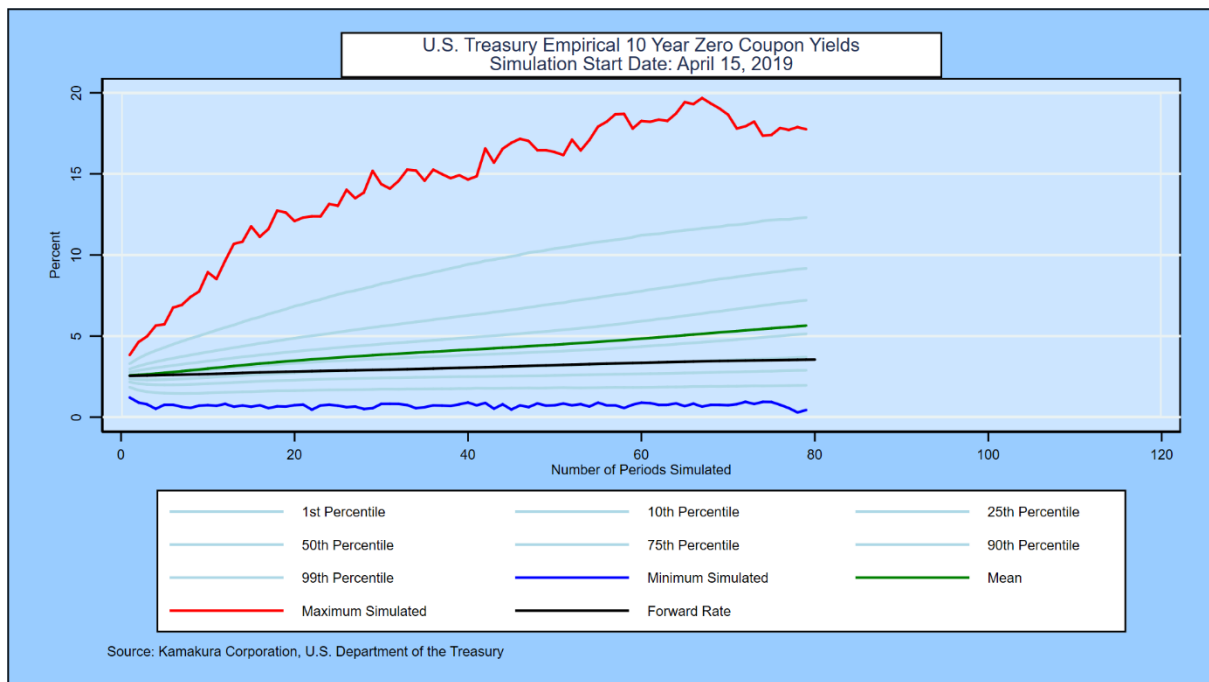
Exhibit XXIV: 1 Year Yields



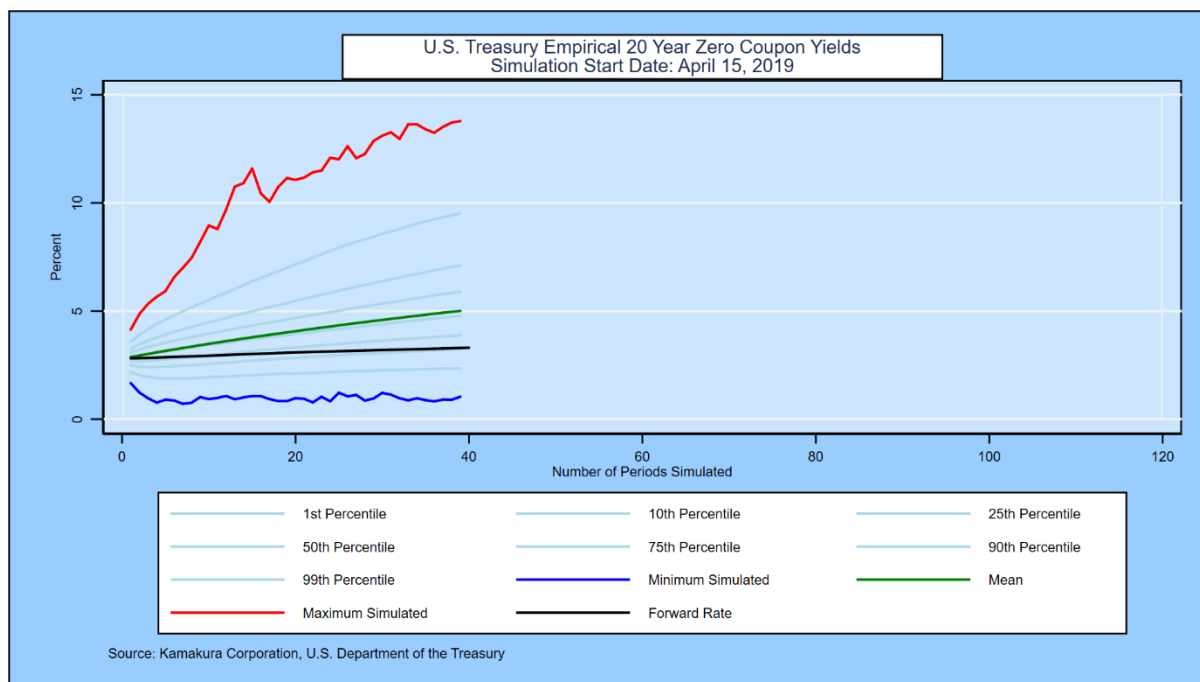
## Exhibit XXV: 5 Year Yields



## Exhibit XXVI: 10 Year Yields



## Exhibit XXVII: 20 Year Yields

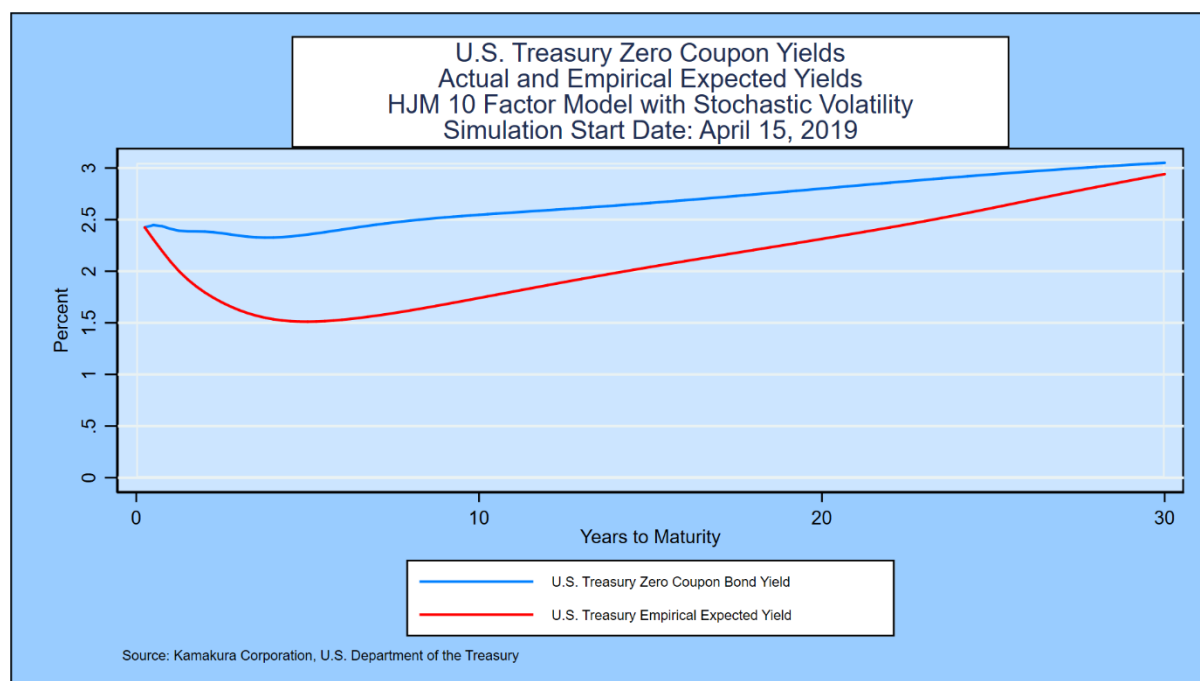


We again determine that there are no unexpected variations in the distribution of empirical yields over time.

### D. Simulation of the Term Premium

The size of the “term premium” of actual zero coupon yields over the expected level of the short rate is a topic of great interest to both academics and policy makers. In a stochastic volatility model, the term premium must be determined by simulation because in general there is no closed form solution for expected future rates. The table below shows a term premium that widens initially, then narrows gradually as the simulation proceeds over time.

## Exhibit XXVIII: Simulation of the Term Premium



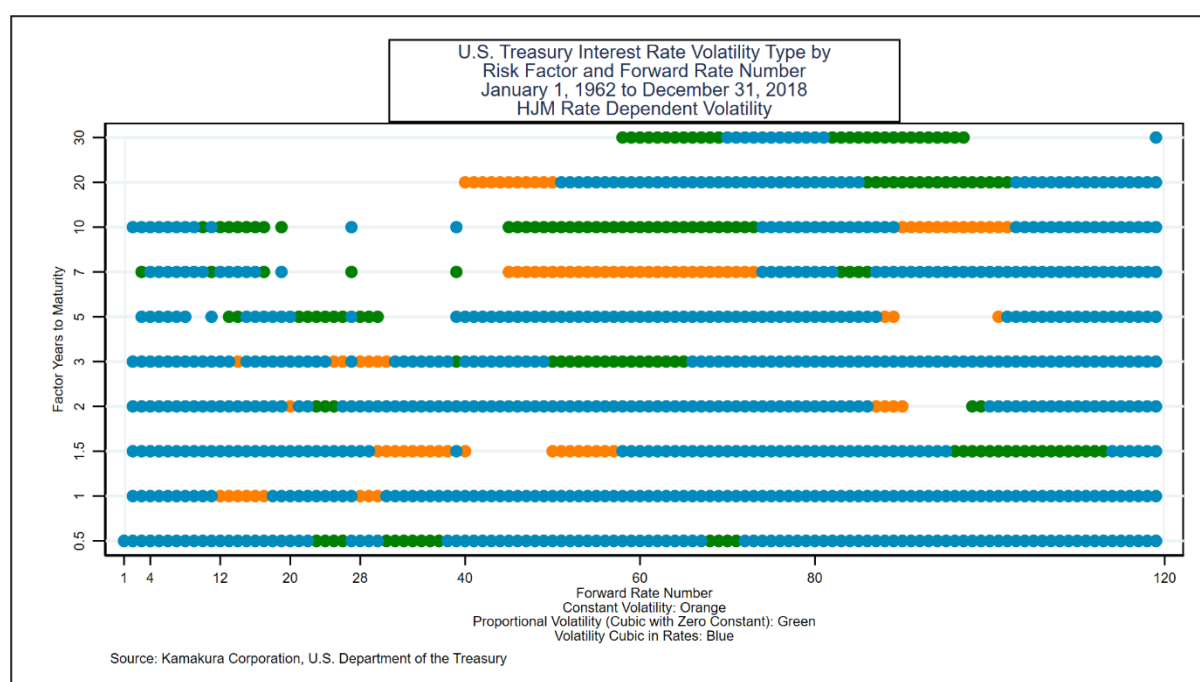
We again conclude that the simulation produces results that are consistent with the “scientific knowledge” about the variation in interest rates around the world.

## IV. Conclusion

The U.S. Treasury yield curve is driven by 10 factors, a number of factors very similar to government yield curves in ten other markets for which studies have been conducted. The January 2, 1962 to December 31, 2018 yield history for the United States is both relatively long and spans a wide range of interest rate experience.

The stochastic volatility assumption provided more accurate and more reasonable parameters than a constant volatility model, particularly in the context of Bayesian simulations as part of the model validation process. Exhibit XXIX summarizes the reasons for those conclusions:

## Exhibit XXIX: Statistical Significance Summarize and Volatility Classification



The vertical axis lists the maturities used as risk factors by years to maturity of the underlying quarterly forward rate. The risk factors are the idiosyncratic movement of each of these forward rates. If the risk factor is statistically significant in explaining the movement of forward rates with the quarterly maturities listed on the horizontal axis, a dot is placed in the grid. Note that the quarterly forward rates maturing in 20 and 30 years are only used as explanatory variables for maturities of 10 years and longer.

The nature of interest rate volatility for each combination of risk factor maturity and forward rate maturity is color coded. If the derived volatility is constant, the color code is orange. This is the affine specification. The graph shows immediately that a small minority of the risk factor maturity/forward rate maturity volatilities is consistent with the affine structure. The green and blue codes address the issue of whether interest rate volatility for that combination of risk factor maturity and forward rate maturity is zero or not when the forward rate is zero. If the measured volatility at a zero forward rate level is zero, the color code is green. Otherwise the color code is blue. In both cases, the volatility is a stochastic function of the forward rates at the start of the simulation period.

The chart summarizes the fact that all 10 factors are statistically significant across the yield curve for U.S. Treasuries. The dominant derived interest rate volatility is the cubic stochastic volatility specification with a non-zero constant. An affine assumption for interest rate volatility is best fitting for a small minority of the combinations of risk factor maturity and forward rate maturity.

## Appendix

In spite of the overwhelming evidence across countries that government bond yields are driven by multiple factors, the use of single factor term structure models in interest rate risk management systems remains common even in some of the world's largest banks. This appendix asks and answers a number of important questions on the use of one

factor models that any sophisticated model audit would pose. Given the answers below, most analysts would conclude that one factor term structure models are less accurate than a long list of multi-factor term structure models and that the one factor models would therefore fail a model audit.

We address two classes of one factor term structure models, all of which are special cases of the Heath, Jarrow and Morton framework, in this appendix using data from the U.S. Treasury market. Answers for other government bond markets cited in the references are nearly identical.

One factor models with rate-dependent interest rate volatility;

Cox, Ingersoll and Ross (1985)

Black, Derman and Toy (1990)

Black and Karasinski (1991)

One factor models with constant interest rate volatility (affine models)

Vasicek (1977)

Ho and Lee (1986)

Extended Vasicek or Hull and White Model (1990, 1993)

### **Non-parametric test 1: Can interest rates be negative in the model?**

The one factor models with rate-dependent interest rate volatility make it impossible for interest rates to be negative. Is this implication true or false? It is false, as [Deutsche Bundesbank yield histories](#), Swedish Government Bond histories, U.S. Treasury histories, Japanese Government Bond yields and yields in many other countries show frequent negative yields in recent years. Table V and this video of forward rates and zero coupon bond yields for the Japanese Government Bond yield curve documents the existence of negative forward rates using daily data from September 24, 1974 through December 30, 2016:

<https://www.youtube.com/watch?v=X49I1rIZPJg>

**Non-parametric test 2:** As commonly implemented, one factor term structure models imply that all yields will either (a) rise, (b) fall, or (c) remain unchanged. This implication is false, as documented for the United States in Table III. In fact, yield curves have twisted on 83.39% of the observations for the U.S. Treasury market.

**Non-parametric test 3:** The constant coefficient one-factor models imply that zero coupon yields are normally distributed and so are the changes in zero coupon yields. In the U.S. Treasury market, this implication is rejected by three common statistical tests for 120 of 120 quarterly maturities for zero yields and for all 120 of the quarterly changes, as shown in Table II.

**Assertion A: There are no factors other than the short term rate of interest that are statistically significant in explaining yield curve movements.** This assertion is false. Table VI shows, using principal components analysis, that 8-12 factors are needed to explain the movements of the U.S. Treasury yield curve. Exhibit XXIX makes the same point in more detail.

**Assertion B: There may be more than one factor, but the incremental explanatory power of the 2<sup>nd</sup> and other factors is so miniscule as to be useless.** This assertion is false, as the 2<sup>nd</sup> through 10<sup>th</sup> factors in the U.S. Treasury market explain 47% of forward rate movements, compared to 53% for the first factor alone. In most countries, the best “first factor” is not the short rate of interest used by many large banks; it is the parallel shift factor of the Ho and Lee model.

**Assertion C: A one-factor “regime shift” model is all that is necessary to match the explanatory power of the 2<sup>nd</sup> and other factors.** This assertion is also false. A [recent study](#) prepared for a major U.S. bank regulator also confirmed that a one factor “regime shift” term structure model made essentially no incremental contribution toward resolving the persistent lack of accuracy in one factor term structure models.

## REFERENCES

- Adams, Kenneth J. and Donald R. van Deventer, "Fitting Yield Curves and Forward Rate Curves with Maximum Smoothness," *Journal of Fixed Income*, 1994, pp. 52-61.
- Adrian, Tobias, Richard K. Crump and Emanuel Moench, "Pricing the Term Structure with Linear Regressions," Federal Reserve Bank of New York, Staff Report 340, August 2008, revised August 2013.
- Angrist, Joshua D. and Jorn-Steffen Pischke, *Mostly Harmless Econometrics: An Empiricist's Companion*, Princeton University Press, Princeton, 2009.
- Berger, James O. *Statistical Decision Theory and Bayesian Analysis*, second edition, Springer-Verlag, 1985.
- Berry, Donald A. *Statistics: A Bayesian Perspective*, Wadsworth Publishing Company, 1996.
- Campbell, John Y, Andrew W. Lo, and A. Craig McKinley, *The Econometrics of Financial Markets*, Princeton University Press, 1997.
- Gelman, Andrew and John B. Carlin, Hal S. Stern, David B. Dunson, Aki Vehtari, and Donald B. Rubin, *Bayesian Data Analysis*, third edition, CRC Press, 2013.
- Goldberger, Arthur S. *A Course in Econometrics*, Harvard University Press, 1991.
- Hamilton, James D. *Times Series Analysis*, Princeton University Press, 1994.
- Hansen, Bruce E. [\*Econometrics\*](#), University of Wisconsin, January 15, 2015.
- Hastie, Trevor, Robert Tibshirani and Jerome Friedman, [\*Elements of Statistical Learning: Data Mining, Inference and Prediction\*](#), Springer, second edition, tenth printing, 2013.
- Heath, David, Robert A. Jarrow and Andrew Morton, "Bond Pricing and the Term Structure of Interest Rates: A Discrete Time Approach," *Journal of Financial and Quantitative Analysis*, 1990, pp. 419-440.
- Heath, David, Robert A. Jarrow and Andrew Morton, "Contingent Claims Valuation with a Random Evolution of Interest Rates," *The Review of Futures Markets*, 9 (1), 1990, pp. 54 -76.
- Heath, David, Robert A. Jarrow and Andrew Morton, "Bond Pricing and the Term Structure of Interest Rates: A New Methodology for Contingent Claim Valuation," *Econometrica*, 60(1), 1992, pp. 77-105.
- Heath, David, Robert A. Jarrow and Andrew Morton, "Easier Done than Said", *RISK Magazine*, October, 1992.

Jarrow, Robert A. *Modeling Fixed Income Securities and Interest Rate Options*, second edition, Stanford University Press, Stanford, 2002.

Jarrow, Robert A. and Stuart Turnbull, *Derivative Securities*, second edition, South-Western College Publishing, Cincinnati, 2000.

Jarrow, Robert A. and Donald R. van Deventer, "Monte Carlo Simulation in a Multi-Factor Heath, Jarrow and Morton Term Structure Model," Kamakura Corporation Technical Guide, Version 4.0, June 16, 2015

Jarrow, Robert A. and Donald R. van Deventer, "Parameter Estimation for Heath, Jarrow and Morton Term Structure Models," Kamakura Corporation Technical Guide, Version 4.0, May 5, 2017.

Johnston, J. *Econometric Methods*, McGraw-Hill, 1972

Kim, Don H. and Jonathan H. Wright, "An Arbitrage-Free Three Factor Term Structure Model and the Recent Behavior of Long-Term Yields and Distant-Horizon Forward Rates," Finance and Economics Discussion Series, Federal Reserve Board, 2005-33.

Maddala, G. S. *Introduction to Econometrics*, third edition, John Wiley & Sons, 2005.

Papke, Leslie E. and Jeffrey M. Wooldridge, "Econometric Methods for Fractional Response Variables with an Application to 401(K) Plan Participation Rates," *Journal of Applied Econometrics*, Volume 11, 619-632, 1996.

Robert, Christian P. *The Bayesian Choice: From Decision-Theoretic Foundations to Computational Implementation*, second edition, Springer Science+Business Media LLC, 2007.

Stock, James H. and Mark W. Watson, *Introduction to Econometrics*, third edition, Pearson/Addison Wesley, 2015.

Studenmund, A. H. *Using Econometrics: A Practical Guide*, Addison-Wesley Educational Publishers, 1997.

Theil, Henri. *Principles of Econometrics*, John Wiley & Sons, 1971.

van Deventer, Donald R. "Essential Model Validation for Interest Rate Risk and Asset and Liability Management," an HJM model for the U.S. Treasury curve, Kamakura Corporation working paper, [www.kamakuraco.com](http://www.kamakuraco.com), February 11, 2015.

van Deventer, Donald R. "Model Validation for Asset and Liability Management: A Worked Example" using Canadian Government Securities, Kamakura Corporation working paper, [www.kamakuraco.com](http://www.kamakuraco.com), July 20, 2016.

van Deventer, Donald R. "Interest Rate Risk: Lessons from 2 Decades of Low Interest Rates in Japan," Kamakura Corporation working paper, [www.kamakuraco.com](http://www.kamakuraco.com), August 11, 2016.

van Deventer, Donald R. "A Multi-Factor Heath Jarrow and Morton Model of the United Kingdom Government Bond Yield Curve," Kamakura Corporation working paper, [www.kamakuraco.com](http://www.kamakuraco.com), August 17, 2015.

van Deventer, Donald R. "A Multi-Factor Heath Jarrow and Morton Model of the German Bund Yield Curve," Kamakura Corporation working paper, [www.kamakuraco.com](http://www.kamakuraco.com), August 21, 2015.

van Deventer, Donald R. "A Multi-Factor Heath Jarrow and Morton Model of the Australia Commonwealth Government Securities Yield Curve," Kamakura Corporation working paper, [www.kamakuraco.com](http://www.kamakuraco.com), August 27, 2015.

van Deventer, Donald R. "A Multi-Factor Heath Jarrow and Morton Model of the Swedish Government Bond Yield Curve," Kamakura Corporation working paper, [www.kamakuraco.com](http://www.kamakuraco.com), September 3, 2015.

van Deventer, Donald R. "Spanish Government Bond Yields: A Multi-Factor Heath Jarrow and Morton Model," Kamakura Corporation working paper, [www.kamakuraco.com](http://www.kamakuraco.com), September 10, 2015.

van Deventer, Donald R. "Singapore Government Securities Yields: A Multi-Factor Heath Jarrow and Morton Model," Kamakura Corporation working paper, [www.kamakuraco.com](http://www.kamakuraco.com), September 22, 2015.

van Deventer, Donald R. "The Regime Change Term Structure Model: A Simple Model Validation Approach," Kamakura Corporation working paper, [www.kamakuraco.com](http://www.kamakuraco.com), January 26, 2016.

van Deventer, Donald R. "An 8 Factor Heath, Jarrow and Morton Model for the Japanese Government Bond Yield Curve, 1974 to 2016: The Impact of Negative Rates and Smoothing Issues," Kamakura Corporation working paper, [www.kamakuraco.com](http://www.kamakuraco.com), June 21, 2017.

van Deventer, Donald R., Kenji Imai and Mark Mesler, *Advanced Financial Risk Management*, second edition, John Wiley & Sons, Singapore, 2013.

Woolridge, Jeffrey M. *Econometric Analysis of Cross Section and Panel Data*, The MIT Press, 2002.